

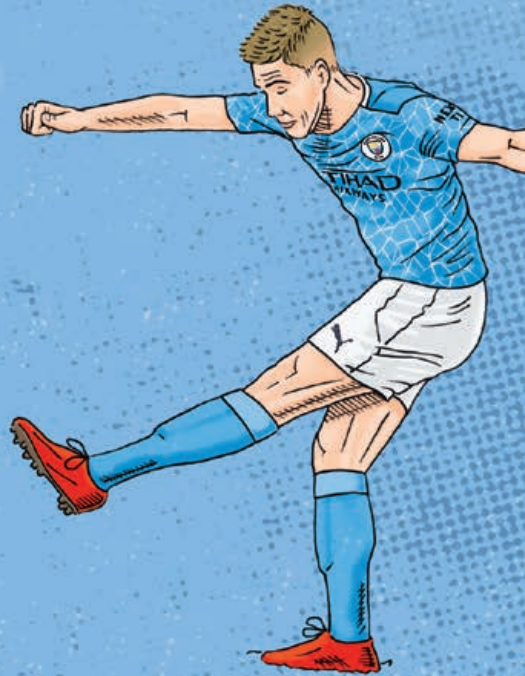
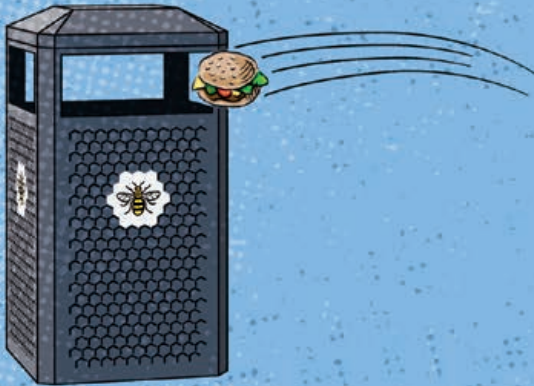
SOLUTION#1

TIP:

Go meat free one day a week

FACT:

The average daily water consumption of a meat eater is **5,000 litres**, vs **2,500** for a vegetarian





TIP:

**Plant trees to protect
the watershed**

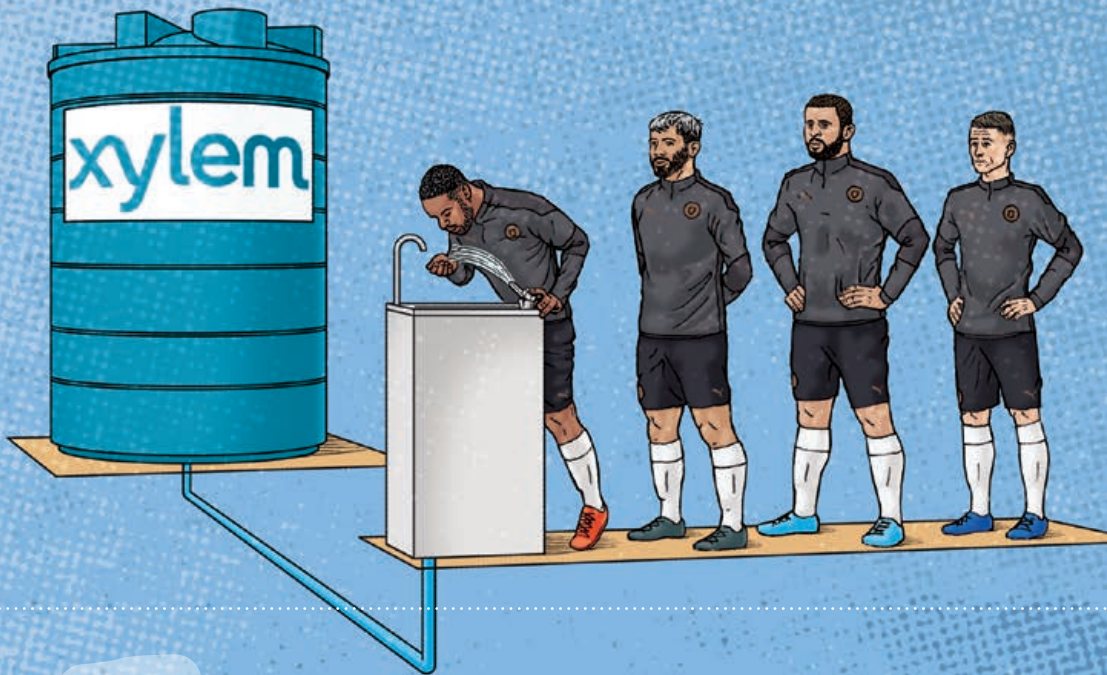
FACT:

**Riverbanks with
trees absorb
153% more water
than those without**

SOLUTION#2



xylem
Let's Solve Water



TIP:

Utilise rainwater harvesting

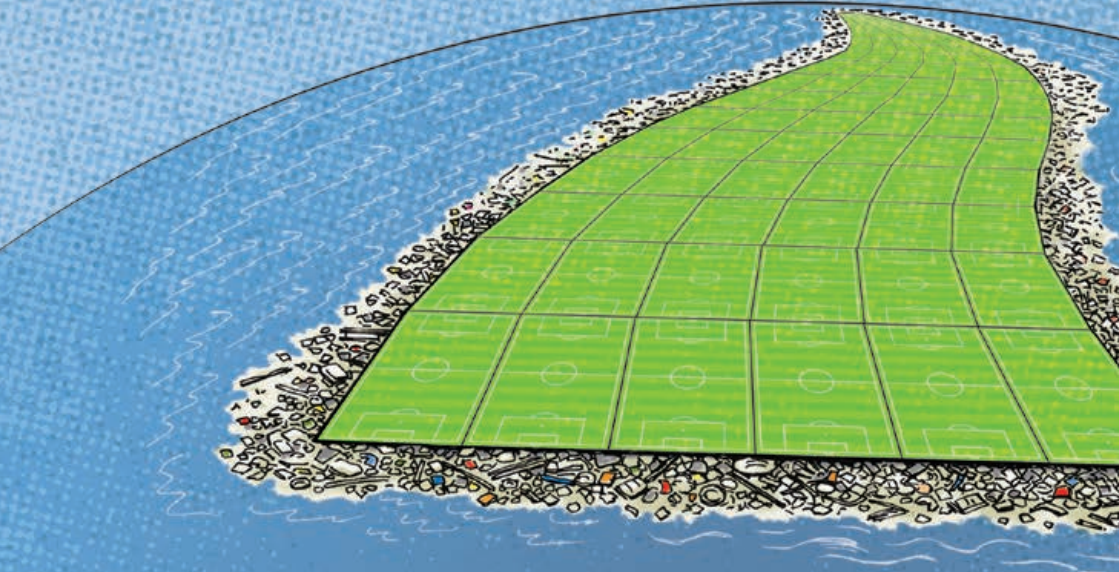
FACT:

A rainwater harvesting tank allows homes to save 50% of household water used each year (24,000 litres), that is enough to keep a player hydrated for 2 seasons

SOLUTION#3



xylem
Let's Solve Water



SOLUTION#4

TIP:

Don't litter

FACT:

8 million tonnes of plastic goes into the ocean each year, contributing to the growth of the Great Pacific Garbage Patch which stretches over 1.6 million square kilometres. It is big enough to house 270,504,622 football pitches!



xylem
Let's Solve Water

SOLUTION#5

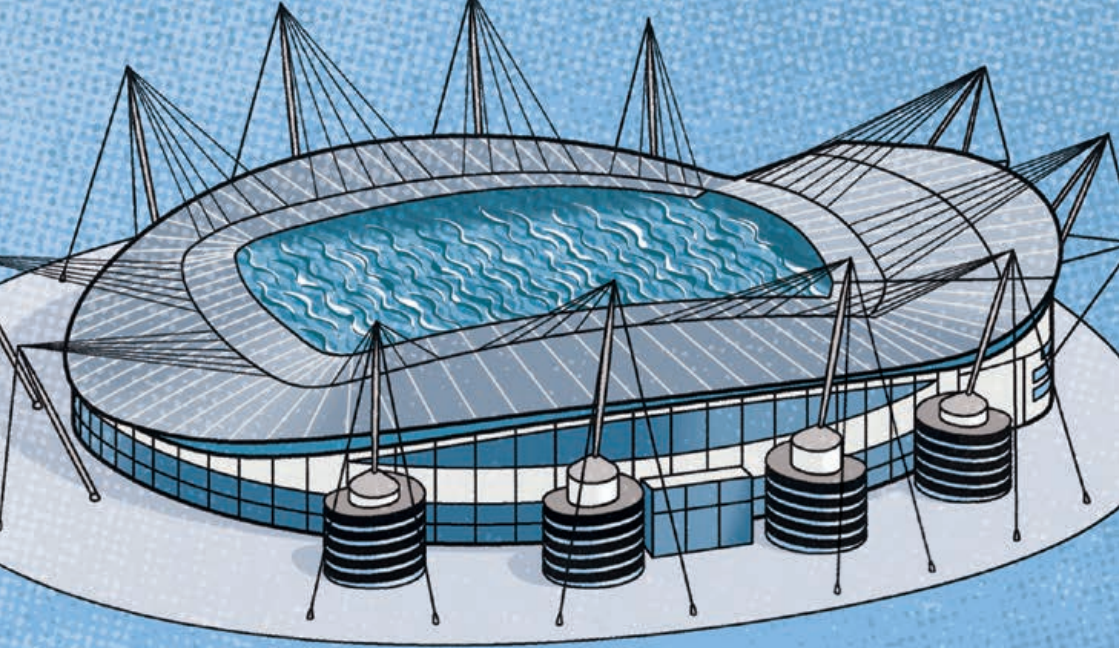
TIP:

**Don't flush wet wipes
down the drain**

FACT:

**In 2019 a 170ft fatberg was
discovered under Manchester,
that is taller than The
National Football Museum**





SOLUTION#6

TIP:

Turn off the tap when brushing your teeth

FACT:

The population of Greater Manchester is 2.813 million, so if everybody turned the tap off while brushing their teeth, this would save 33.7 million litres of water a day! That's enough to fill the Etihad Stadium!



SOLUTION#7

TIP:

Purchase non-toxic cleaning products to protect waterway pollution

FACT:

The River Irwell which features in our badge is one of the most polluted rivers in the world





TIP:

Reduce, reuse, and recycle

FACT:

Plastic bottles take about **three times as much water to produce** than they can hold.

SOLUTION#8



xylem
Let's Solve Water

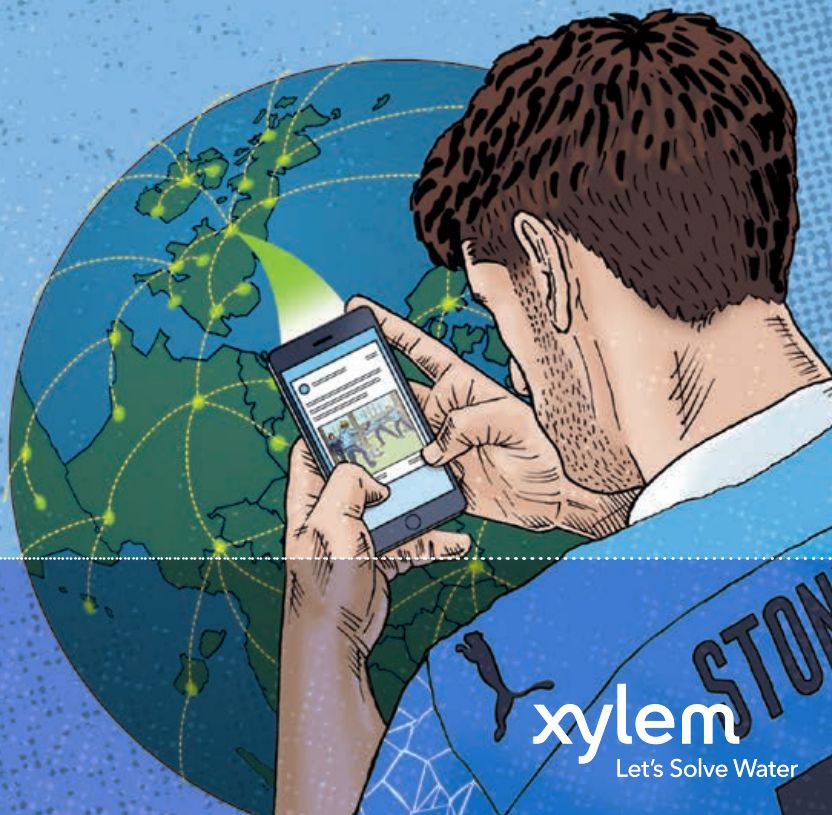
SOLUTION#9

TIP:

Share stories of water issues and how to solve them

FACT:

If you tell 5 people about a story, and they tell 5 new people, by the end of the week – 1.4 million people will have seen the message



xylem
Let's Solve Water

SOLUTION#10

TIP:

Wait for a full load before using washing machine

FACT:

50 litres of water
is used in one
average cycle



SOLUTION#11

TIP:

Sign petitions that help protect your local and global water situation

FACT:

After 10,000 signatures, petitions get a response from the government.

After 100,000 signatures, petitions are considered for debate in Parliament.

