



Xylem Avensor

Get a complete overview of your pump stations with simple, real-time insights and alerts



A trusted solution used in over 40 countries, backed by a global leader

With Avensor, you get a state-of-the-art monitoring solution from a global leader in water technology. Xylem has in-depth experience and expertise in providing monitoring and supervision systems.

With results proven in the field, Avensor provides operators and field technicians with both smart functionality and end-to-end service.



Certified Cybersecurity

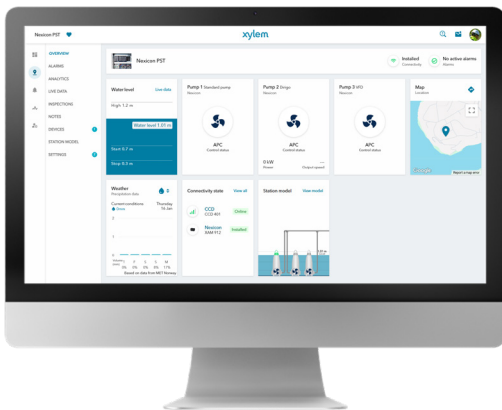
We are certified under the IEC 62443-4-1, a standard specializing in industrial automation and control systems security.

Avensor is securely hosted and guided by industry-standard frameworks like NIST CSF and ISO 27001, ensuring your data is protected.

- **Simple and scalable integration**
Easy connection to your existing equipment (through Modbus, digital, and analog inputs) for immediate value, eliminating the need for expensive and complex upgrades.
- **Unique functions for wastewater**
Anomaly Detection provides early warnings. *Inspection Workflow* helps to improve the efficiency of inspections, reducing the frequency of site visits.
- **Versatile and easy to use**
Operational data and alarms are displayed on a simple interface on web and mobile. Easy to navigate and suitable for all users.
- **End-to-end service**
Xylem offers all levels of service. From on-site installation, to setup and remote assistance through our superior service organization.

Avensor Asset Visibility

Connect pumps and other water assets for a full overview of your operations



Improve visibility, get alerts and data-driven insights to act fast and make smart decisions

Access to real-time data and alerts enables all team members, from operators to field techs, to make informed decisions. If a site visit is needed, callout teams will be prepared to respond quickly, with a better understanding, and the right tools for the job - improving first time fix rates.

Avensor makes it easy to monitor pump station health remotely at any time, reducing the frequency of site visits and saving time.

Easy to connect and easy to use

All you need is a modem connected to the assets, a monitoring device, and a user account.

Once logged in, the pre-configured templates are populated with live data so that you can start monitoring your assets and stations remotely on your smartphone, tablet or computer.

Key features available on desktop or mobile app

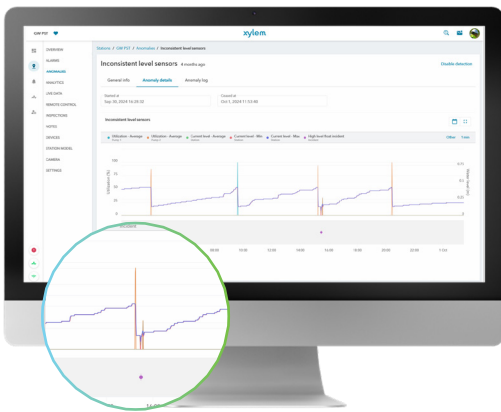
- **Station Overview:** Quickly see the status and alarms of all your connected stations
- **User-Friendly Analytics:** Get real-time operational data and trend data on a simple interface to aid decision-making
- **Alarm Management:** Set up and distribute alarms to the right people via app, email, or SMS
- **Asset Documentation:** Access Xylem manuals and user guides for your assets conveniently in the app
- **Local support:** From onsite installation, to setup and remote assistance when you need it



“Avensor gives us a whole new overview. We can see everything that’s going on and can quickly be in place if needed. Getting great and fast service is important to us, as well as being able to trust an organization.” - Håkan Nilsson, Service Manager at the Port of Trelleborg

Avensor Insights

Improve uptime and efficiency with early detection and advanced data-driven insights



Unique features developed specifically for wastewater pumping to help you move from reactive to proactive

All the user-friendly features that come with Avensor Asset Visibility and more. Avensor Insights helps you solve problem areas such as lack of prioritization, frequent or time-consuming inspection visits, and unexpected downtime.

Key features available on desktop or mobile app

- **Anomaly Detection:** When data deviates from normal operations, Avensor automatically sends notifications about potential issues

Available Anomalies

- Inconsistent level sensors
- Unexpected variations in water level
- Unequal number of starts
- Very short pump cycles
- Unequal run times
- Backflow

Optimize maintenance with data-driven insights

Early warnings and advanced insights help you optimize maintenance work and plan your resource allocation with greater accuracy.

Fewer station visits give you time back to focus on preventative maintenance and critical tasks, improving overall efficiency.

- **Inspection Workflow:** Perform regular inspections efficiently with guided inspection rounds and store information in Avensor for easy access (instead of paper-based documents kept onsite)
- **Data-driven view:** Get insights and support to view, compare, and prioritize where to focus your efforts across all your connected assets



“The visibility that Avensor gives us is brilliant. We use the Avensor app to view a pump station’s performance before we go to the site, and if everything is going well, we might not even need to go there at all.” - Nathan Wield, Wastewater Operations West Manager, Scottish Water