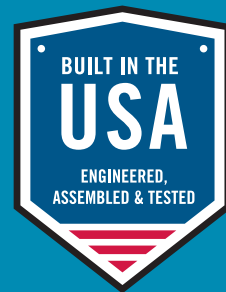




# AQUAFORCE<sup>®</sup> e-MTV

## Packaged Booster System



# Introducing AQUAFORCE e-MTV Packaged Booster System from Goulds Water Technology

## Features that make a difference

- 2 or 3 pump configurations available
- e-SV stainless steel vertical multistage pumps
- Up to 950 GPM, need eng. to confirm regarding working pressure
- 208-230, 460, 575 Volt premium efficient motors
- 304 stainless steel grooved manifolds
- UL Type 1 control panel
- 7" color touchscreen interface
- Individual drive circuit breakers
- Lead/lag alternation
- No flow shutdown
- Pipe fill mode
- Trending log: run time, pressure and flow

### General

- NSF/ANSI 61 Annex G certified
- UL/cUL category QCZJ package Pump system listing
- UL508A control panel listing
- BTL certified

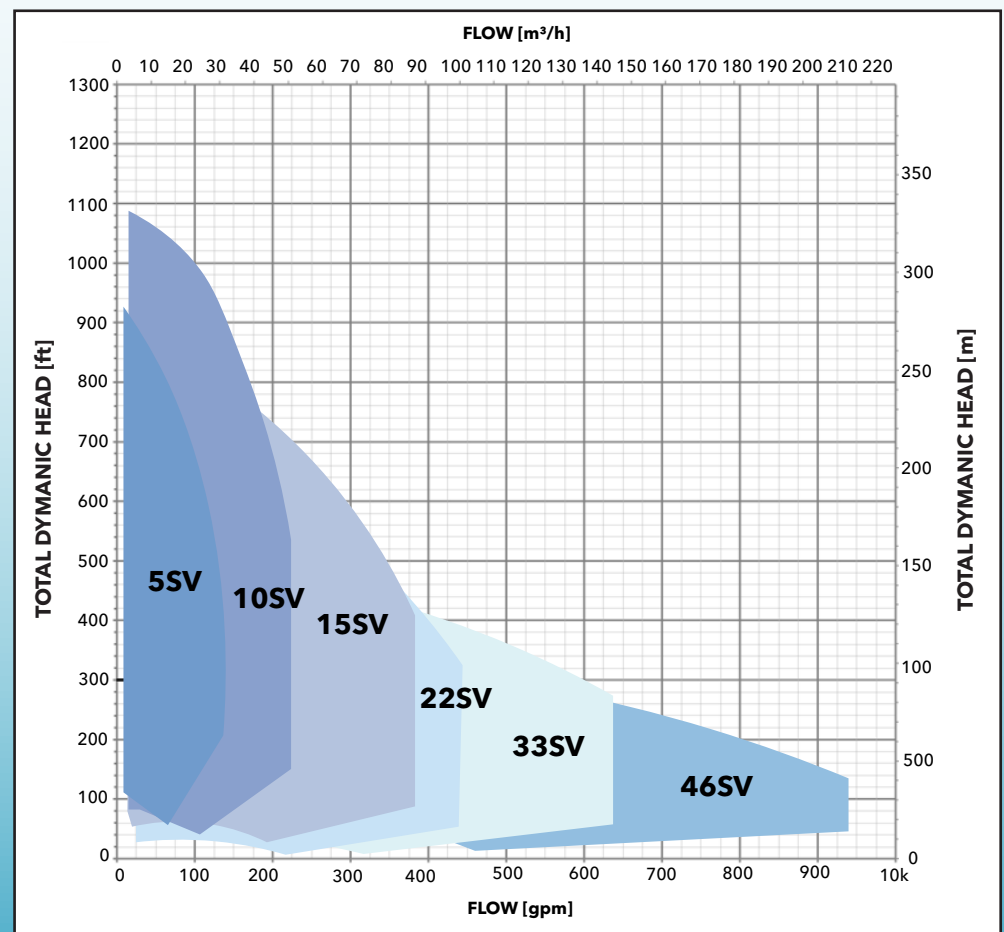
### Typical applications

- Rural water districts
- Irrigation
- Industry plants
- Buildings

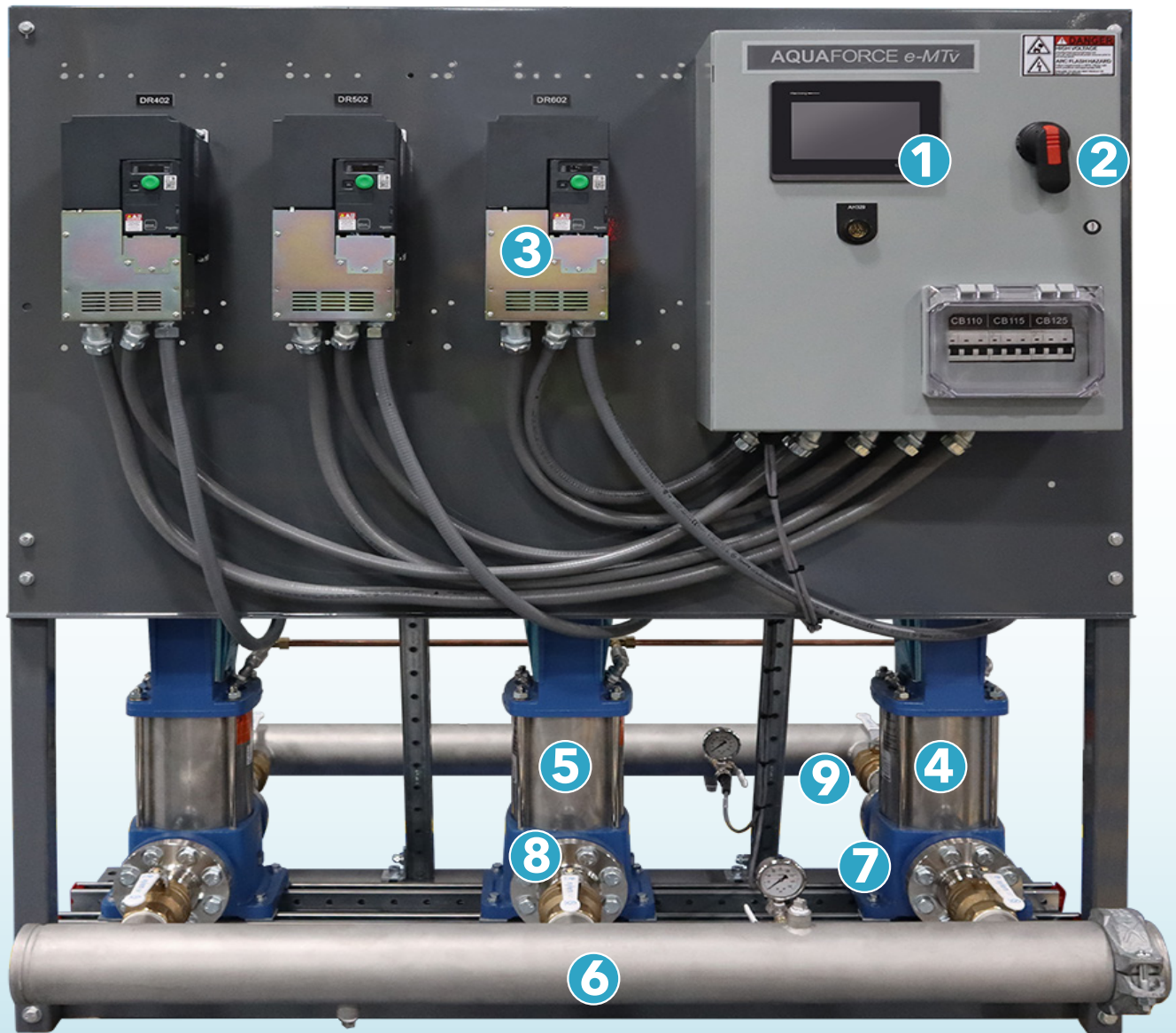
### Standard options

- Manifold flanges
- Optional low inlet pressure switch (ship loose)
- Alarm horn
- MODBUS® serial RS-485 or TCP/IP
- Thermal purge
- Redundant pressure transducer
- System protections: pump/VFD fault, loss of prime, transducer fault, end of curve protection, high and low pressure

### AQUAFORCE e-MTV family curves



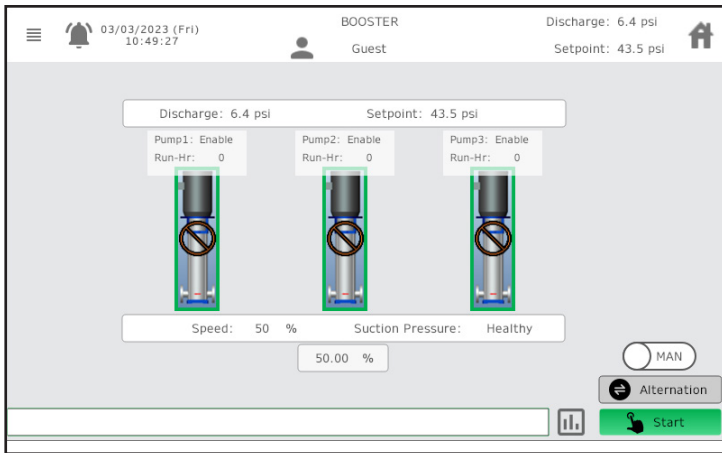
NOTE: Specifications / equipment are subject to change without notice. Verify with factory.



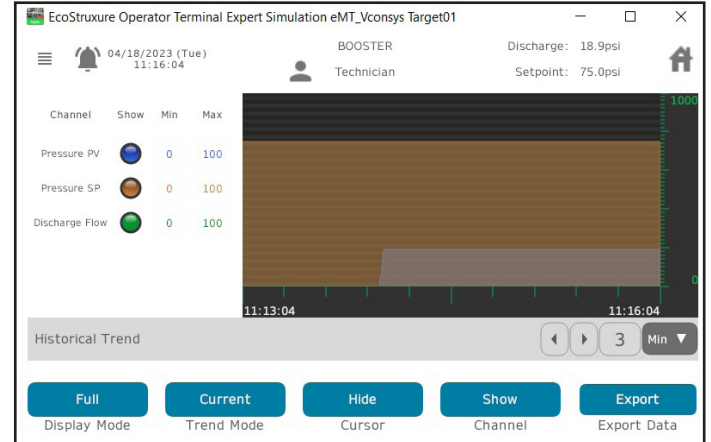
1. e-MTV Pump Logic Controller with UL Type 1 enclosure and 7" full color touchscreen interface. Intuitive and simplified user interface for ease of commissioning and troubleshooting
2. Station disconnect switch
3. VFD per pump/motor assembly permits continued operation and serviceability while maintaining partial or full flow
4. Premium efficiency motors
5. e-SV vertical multistage pumps (not shown)
6. 304 stainless steel suction and discharge manifolds grooved end (optional flanges)
7. 2.5" pressure gauges
8. NSF-61 certified isolation valves
9. Silent Type 316 stainless steel check valves

# AQUAFORCE Status At-a-Glance

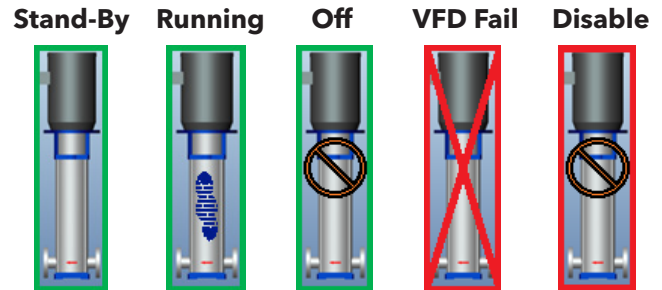
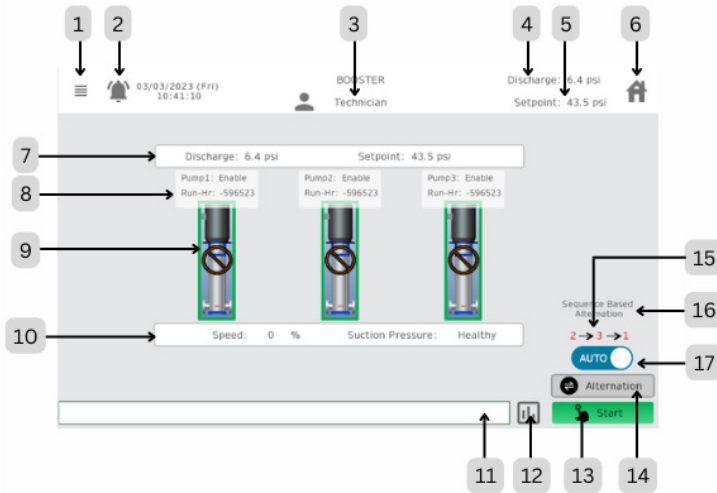
## Home screen



## Trending log screen



For complete system capabilities and detailed specifications go to [www.xylem.com/goulds](http://www.xylem.com/goulds)



1. Menu button
2. Alarm screen navigation button
3. Current user login status
4. Current discharge pressure
5. Current PV setpoint
6. Home button
7. Discharge bar
8. Pump information
9. Pump status
10. Pump speed
11. Alarm status screen
12. Trend screen navigation button
13. System start/stop button
14. Manual alternation
15. Pump sequence
16. Alternation method selected
17. System auto/manual button



### Xylem Product Cybersecurity

Xylem values your system security and the availability of your critical services. For more information on Xylem cybersecurity practices or to contact the cybersecurity team please visit [xylem.com/security](http://xylem.com/security).



Xylem Inc.  
2881 East Bayard Street Ext., Suite A  
Seneca Falls, NY 13148  
Phone: (844) XYL-PUMP [844-995-7867]  
Fax: (888) 322-5877  
[www.xylem.com/goulds](http://www.xylem.com/goulds)

Xylem and AQUAFORCE are trademarks or registered trademarks of Xylem Inc. or one of its subsidiaries. Goulds is a registered trademark of ITT Manufacturing Enterprises LLC and is used under license. MODBUS is a registered trademark of Schneider Electric USA, Inc. All other trademarks or registered trademarks are property of their respective owners.

© 2023 Xylem Inc. GWTSSe-MTV-120017 R1 May 2023

To learn more about  
AQUAFORCE e-MTV

