

CWK24-AGS

WASTEWATER BASIN KIT

Axial grinding power and performance in a durable, easy to install basin



BRCWK24-AGS

The **CWK24-AGS Wastewater Basin Kit** delivers proven axial grinder performance specifically designed to tackle the challenges of the modern wastewater stream in a durable, corrosion resistant basin. This powerful, simple to install kit features an AGS Series axial grinder pump, a CWK 24" polyethylene, simplex basin and a piggyback float switch.

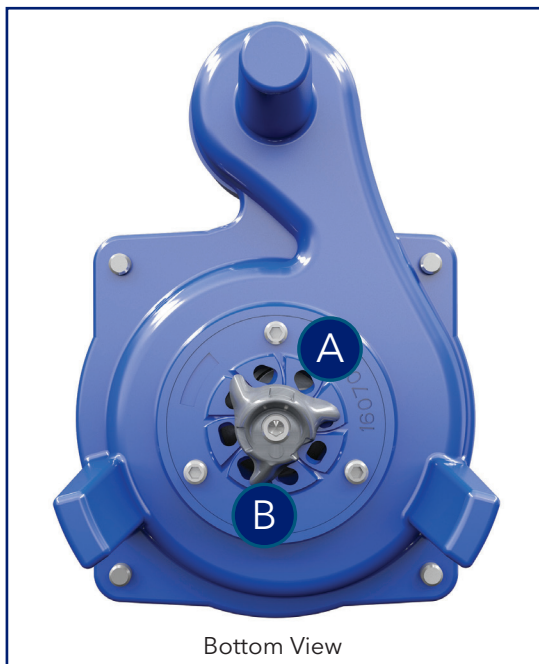
APPLICATIONS

Designed for residential, light commercial and construction applications including:

- Basements
- Rural water districts
- Parks
- Dewatering
- Sewage lift stations
- Waste drainage in new additions (below the sewer line)
- Anywhere wastewater or drainage must be disposed of quickly, quietly and efficiently

FEATURES

- **Proven Design** - The AGS Series powerful axial grinder technology combined with a semi-open impeller, balanced for smooth operation easily slices through the solids, flushables and trash found in the modern wastewater stream without roping and clogging.
- **Minimize Downtime and Repairs** - The axial grinder's stainless steel, eight (8) hole cutter plate and three (3) blade cutter generate up to 4.9 million bites per hour (up to 66' TDH) reducing waste to a fine slurry and minimizing downtime and repair.
- **Simplified Installation** - The shallow 24" basin simplifies installation in challenging soil conditions.



Axial Grinder Technology: Stainless steel, non-clogging design. Generates up to 4.9 million bites per hour (up to 66' TDH).

A. Eight (8) hole cutter plate.

B. Three (3) blade cutter with advanced design features to provide superior performance.

CWK24-AGS Wastewater Basin Kit Contains:

- AGS Series Axial Grinder Pump
- CWK24 Wastewater Basin
- Piggyback Float Switch

PART NUMBERS

CWK24-AGS Wastewater Basin Kit Model Number*	AGS Axial Grinder Pump Model Number	Basin	Float Switch
24AGS0511	AGS0511	Simplex, 24"x 24", Polyethylene (CWK24)	Piggyback Float (A2H31)
24AGS0512	AGS0512		Piggyback Float (A2H32)
24AGS1011	AGS1011		Piggyback Float (A2H31)
24AGS1012	AGS1012		Piggyback Float (A2H32)

SPECIFICATIONS

AGS Series Axial Grinder Pump:

24AGS0511* 24AGS0512* 24AGS1011* 24AGS1012*				
Voltage	115	230	115	230
Amps	9A	4.5A	11A	5.5A
HP	0.5		1	
Capacity	46 gpm		53 gpm	
Head	42 feet, TDH		66 feet, TDH	
Grinder	Axial, Stainless Steel (440C)			
Cutter Plate	8 Hole, 3 Blade, Stainless Steel (440C)			
Bites Per Hour	4.9 Million			
Impeller	Semi-Open, Cast Iron			
Phase	Single			
Speed	3500 rpm			
Discharge	2"			
Motor	Oil Cooled, CSCR			
Casing	Uni Body, Class 30 Cast Iron			
Shaft	Stainless Steel, 300 Series SS			
Bearings	Upper/Lower Sealed Ball Bearings			
Hz	60			
Seal	Hardfaced Silicon Carbide on Silicon Carbide			
Cord	20 feet			
Insulation	Class F			
Weight	65 lbs			
Warranty	3 Year			

CWK24 Basin:

Basin Material	Ribbed polyethylene basin (CWK24)
Basin Type	Simplex
Cover	Steel, with inspection port, 2" discharge, 2" vent and electrical cord grommet
Inlet Hub	4" shipped loose (inlet hole cut by installer to align with inlet pipe)

A2H Series Pump Switch**:

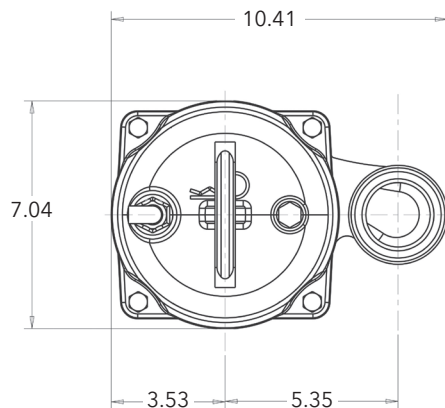
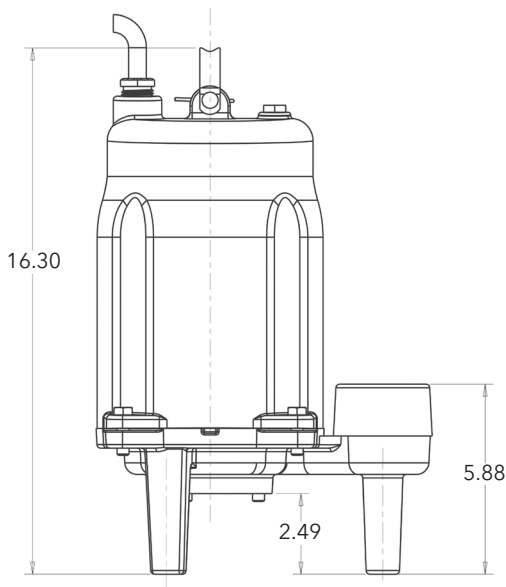
Switch	Mechanically activated, vertical operation
Pump Controls	Up to ½ hp at 120 V and up to 1 hp at 230 V
PVC Housing	Non corrosive PVC (liquids up to 125°F (52° C))
Dimensions	12" high, 5" deep, 3" wide
Pumping Range	.87" to 6.5"
Cord	16 AWG, SJOW
CSA	Certified

* Note: Unassembled basin kit. Installer to assemble. Installer to provide and apply pipe adhesive, drill weep hole in discharge pipe, and to provide and install check valve outside basin.

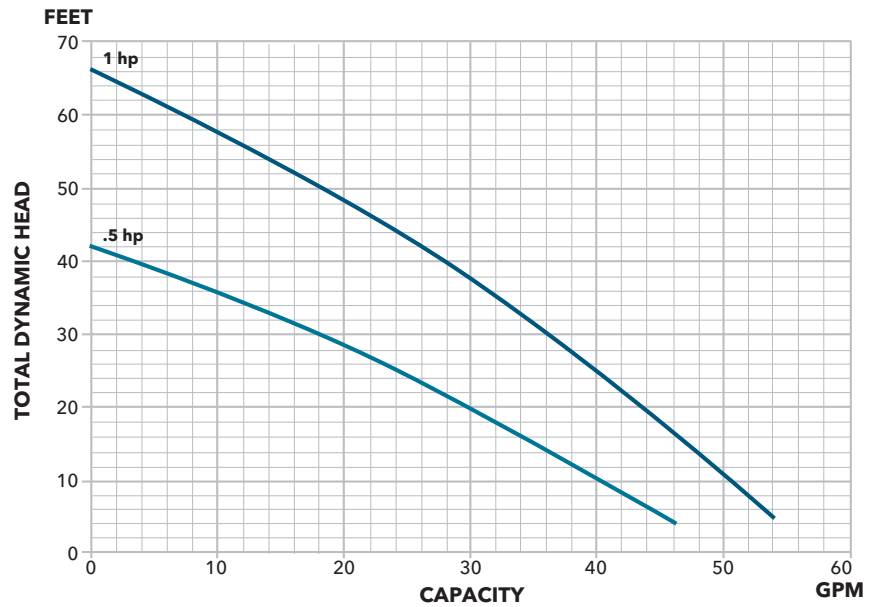
** Available for pump down applications only; and for confined applications requiring an accurate pumping range. UL recognized for use in non-potable water and sewage.

CWK24-AGS Specifications

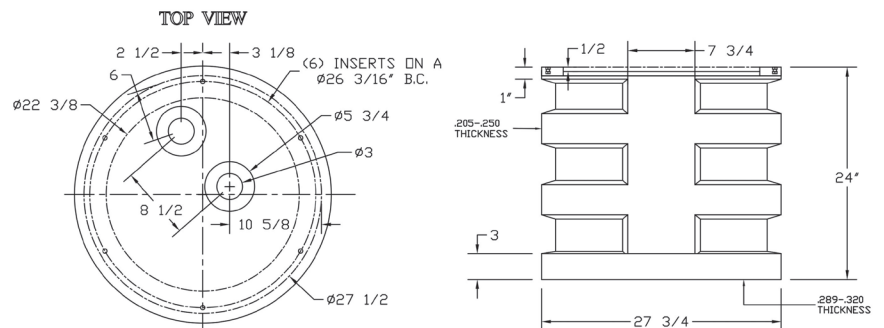
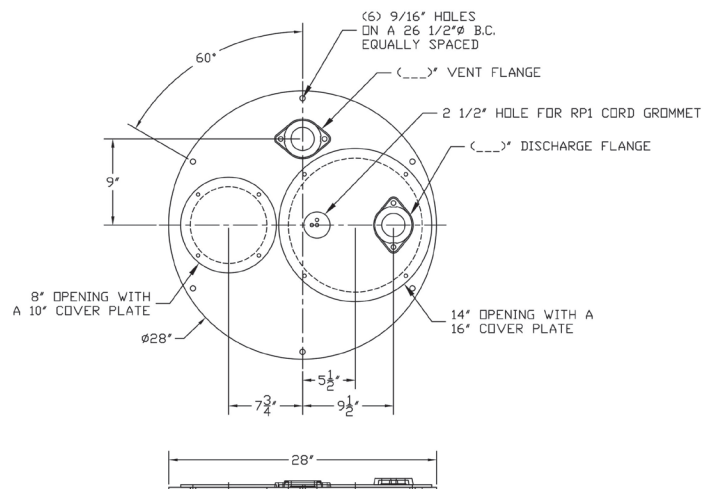
AGS PUMP DIMENSIONAL DRAWING



PUMP PERFORMANCE CURVE



CWK24 BASIN DIMENSIONAL DRAWING



Xylem Inc.
Phone: (866) 325-4210 • Fax: (888) 322-5877
www.xylem.com/goulds

Goulds is a registered trademark of Goulds Pumps, Inc. and is used under license.
© 2019 Xylem Inc. BRCWK24-AGS July 2019