



# e-SVX Smart Pump

Integrated pump, motor & variable speed drive solutions, **powered by hydrovar® X**

### Table of Contents

Numbering System for 1 - 22SVX Liquid End Only . . . . .	3
Numbering System for 33 - 125SVX Liquid End Only . . . . .	4
Numbering System for 1 - 22SVX Pump & Motor Combination . . . . .	5
Numbering System for 33 - 125SVX Pump & Motor Combination . . . . .	6
Numbering System for 1 - 22SVX Repair Stack . . . . .	7
Numbering System for 33 - 125SVX Repair Stack . . . . .	8
1 - 125SVX Impellers and Intermediate Bearings Layout. . . . .	9
Coupling Tables. . . . .	10
Motor Adapter. . . . .	11
Major Components 1SV - 22SVX . . . . .	12-13
Major Components 33SV - 92SVX . . . . .	14-15
Major Components 125SVX . . . . .	16-17
Shafts. . . . .	18
Casings . . . . .	19-20
Tie Rods . . . . .	21-22
Horizontal Mounting and Replacement Kits by Motor Type . . . . .	23

### e-SVX Product Line Numbering System for 1 - 22SVX Liquid End Only

The various versions of the e-SVX line are identified by a product code number on the pump label. This number is also the catalog number for the pump. The meaning of each digit in the product code number is shown below. Note: Not all combinations are possible.

22	SVX	9	F	D	A	0	
----	-----	---	---	---	---	---	--

#### Special Configurations [1-2]

- [P] = Passivation only
- [S] = Customized configuration
- [Z] = High Pressure (250/300 psi pump body)

#### Seal Material

- 0 = Carb-SilCar-Viton (Standard)
- 1 = Carb-SilCar-AFLAS (HighTemp)
- 2 = SilCar-SilCar-Viton
- 4 = SilCar-SilCar-EPR
- 6 = Carb-SilCar-EPR

#### Pole-Hz-Phase [1]

- [A] = 4-60-3 (1200-3600)

#### Motor Frame (NEMA) [1]

- [C] = 210TC
- [D] = 250TC
- [H] = 140TC

#### Configuration Option [1]

- |                       |                              |
|-----------------------|------------------------------|
| [C] = Clamp 316       | Bottom & Top Location        |
| [F] = Round-304 (SVB) | [R] = (SVC) 12Suct - 12Disch |
| [G] = CI-304          | [W] = (SVC) 12Suct - 03Disch |
| [N] = Round-316 (SVD) | [X] = (SVC) 12Suct - 06Disch |
| [P] = Victaulic-316   | [Y] = (SVC) 12Suct - 09Disch |
| [T] = Oval-304 (SVA)  |                              |

#### Number of stages [1-2]

Do not include 0 for single digit staging (i.e. 2 not 02).

#### Product Line [3]

[SVX] = e-SV stainless vertical multistage pump with hydrovar X

#### Nominal Flow [1-3]

- |              |                |
|--------------|----------------|
| [1] = 5 GPM  | [10] = 53 GPM  |
| [3] = 16 GPM | [15] = 80 GPM  |
| [5] = 26 GPM | [22] = 116 GPM |

### e-SVX Product Line Numbering System for 33 - 125SVX Liquid End Only

The various versions of the e-SVX line are identified by a product code number on the pump label. This number is also the catalog number for the pump. The meaning of each digit in the product code number is shown below. Note: Not all combinations are possible.

#### Example Product Code

125	SVX	1	0	C	G	D	A	0	
-----	-----	---	---	---	---	---	---	---	--

#### Special Configurations [1-2]

- [P] = Passivization only
- [S] = Customized configuration
- [Z] = High Pressure (250/300 psi pump body)

#### Seal Material

- 0 = Carb-SilCar-Viton (Standard)
- 1 = Carb-SilCar-AFLAS (HighTemp)
- 2 = SilCar-SilCar-Viton
- 4 = SilCar-SilCar-EPR
- 6 = Carb-SilCar-EPR

#### Pole-Hz-Phase [1]

- [A] = 4-60-3 (1200-3600)

#### Motor Frame (NEMA) [1]

- [C] = 210TC
- [D] = 250TC

#### Configuration Option [1]

- [G] = CI-304
- [N] = Round-316

#### Reduced Trim Diameter [1]

- Only applicable to 125SVX. Leave blank for 33SVX-92SVX.
- [C] = 145 mm (full dia.)

#### Number of reduced trim impellers [1]

The number of reduced trim impellers is indicated after the "/" in the model description.  
See model list for available options by pump size.

#### Number of stages [1-2]

Do not include 0 for single digit staging (i.e. 2 not 02)

#### Product Line [3]

- [SVX] = e-SV stainless vertical multistage pump with hydrovar X

#### Nominal Flow [1-3]

- [33] = 175 GPM
- [46] = 240 GPM
- [66] = 350 GPM
- [92] = 485 GPM
- [125] = 660 GPM

### e-SVX Product Line

### Numbering System for 1 - 22SVX Pump & Motor Combination

#### Example Product Code

22	SVX	9	F	M	A	X	X	0	
----	-----	---	---	---	---	---	---	---	--

Each e-SVX pump is identified by a product code on the pump label. Each digit in the code is described below. The product code is also the catalog number for the pump. **Note: Not all combinations are possible.**

#### Special Configurations (1-2 Characters)

- [P] = Passivization only
- [S] = Customized configuration
- [Z] = High Pressure

#### Seal Materials (1 Character)

- [0] = Carbon/SilCar/FKM
- [1] = Carbon/SilCar/AFLAS (High Temp)
- [2] = SilCar/SilCar/FKM
- [4] = SilCar/SilCar/EPR
- [6] = Carbon/SilCar/EPR

#### hydrovar X Version (1 Character)

- [X] = standard hydrovar X

#### Voltage (1 Character)

- [L] = 200-240V
- [X] = 380-480V

#### Pole-Hz-Phase (1 Character)

- [A] = 4-60-3 (1200-3600)

#### Motor HP (1 Character)

- [1] = 4 HP     [L] = 20 HP
- [2] = 5.5 HP   [M] = 25 HP
- [H] = 7.5 HP   [N] = 30 HP
- [J] = 10 HP
- [K] = 15 HP

#### Configuration Option (1 Character)

- |                       |                                   |
|-----------------------|-----------------------------------|
| [C] = Clamp 316       | <b>Bottom &amp; Top Location:</b> |
| [F] = Round-304 (SVB) | [R] = (SVC) 12Suct - 12Disch      |
| [G] = CI-304          | [W] = (SVC) 12Suct - 03Disch      |
| [N] = Round-316 (SVD) | [X] = (SVC) 12Suct - 06Disch      |
| [P] = Victaulic-316   |                                   |
| [T] = Oval-304 (SVA)  |                                   |

#### Number of stages (1-2 Characters)

Omit special characters such as '/' and do not include 0 for single digit staging (i.e. 2 not 02).

#### Product Line (3 Characters)

[SVX] = e-SV stainless vertical multistage pump with hydrovar X

#### Nominal Flow (1-3 Characters)

- [1] = 5 GPM
- [3] = 16 GPM
- [5] = 26 GPM
- [10] = 53 GPM
- [15] = 80 GPM
- [22] = 116 GPM

\* For CE compliant 50 Hz motors, please contact the factory

### e-SV Product Line Numbering System for 33 - 125SVX Pump & Motor Combination

#### Example Product Code

125	SVX	10	C	G	L	A	X	X	0	
-----	-----	----	---	---	---	---	---	---	---	--

#### Special Configurations (1-2 Characters)

- [P] = Passivation only
- [S] = Customized configuration
- [Z] = High Pressure (250/300 psi pump body)

#### Seal Materials (1 Character)

- [0] = Carbon/SilCar/FKM
- [1] = Carbon/SilCar/AFLAS (High Temp)
- [2] = SilCar/SilCar/FKM
- [4] = SilCar/SilCar/EPR
- [6] = Carbon/SilCar/EPR

#### hydrovar X Version (1 Character)

- [X] = standard hydrovar X

#### Voltage (1 Character)

- [L] = 200-240V
- [X] = 380-480V

#### Pole-Hz-Phase (1 Character)

- [A] = 4-60-3 (1200-3600)

#### Motor HP (1 Character)

- [1] = 4 HP      [K] = 15 HP
- [2] = 5.5 HP    [L] = 20 HP
- [H] = 7.5 HP    [M] = 25 HP
- [J] = 10 HP     [N] = 30 HP

#### Configuration Option (1 Character)

- [G] = Round-CI-304
- [N] = Round-316

#### Reduced Trim Diameter (1 Character)

- Only applicable to 125SVX. Leave blank for 33SVX-92SVX.
- [C] = 145 mm (full dia.)

#### Number of stages (1-2 Characters)

- Omit special characters such as '/' and do not include 0 for single digit staging (i.e. 2 not 02).

#### Product Line (3 Characters)

- [SVX] = e-SV stainless vertical multistage pump with hydrovar X

#### Nominal Flow (1-3 Characters)

- [33] = 175 GPM
- [46] = 240 GPM
- [66] = 350 GPM
- [92] = 485 GPM
- [125] = 660 GPM

\* For CE compliant 50 Hz motors, please contact the factory

### e-SV Product Line Numbering System for 1 - 22SVX Repair Stack

The various versions of the e-SVX line are identified by a product code number on the pump label. This number is also the catalog number for the pump. The meaning of each digit in the product code number is shown below. Note: Not all combinations are possible.

#### Example Product Code

22	SVX	R	9	0	
----	-----	---	---	---	--

**Special Configurations [1-2]**

- [P] = Passivation only
- [S] = Customized configuration

**Seal Materials [1]**

- [0] = Carbon/SilCar/FKM
- [1] = Carbon/SilCar/AFLAS (High Temp)
- [2] = SilCar/SilCar/FKM
- [4] = SilCar/SilCar/EPR
- [6] = Carbon/SilCar/EPR

**Number of stages [1-2]**

Do not include 0 for single digit staging (i.e. 2 not 02)

**Repair Stack [1]**

- [R] = Repair stack

**Product Line [3]**

- [SVX] = e-SV stainless vertical multistage pump with hydrovar X

**Nominal Flow [1-3]**

- [1] = 5 GPM
- [3] = 16 GPM
- [5] = 26 GPM
- [10] = 53 GPM
- [15] = 80 GPM
- [22] = 116 GPM

### e-SV Product Line Numbering System for 33 - 125SVX Repair Stack

The various versions of the e-SVX line are identified by a product code number on the pump label. This number is also the catalog number for the pump. The meaning of each digit in the product code number is shown below. Note: Not all combinations are possible.

#### Example Product Code

125	SVX	R	1	0	C	0	
-----	-----	---	---	---	---	---	--

**Special Configurations [1-2]**

- [P] = Passivization only
- [S] = Customized configuration

**Seal Materials [1]**

- [0] = Carbon/SilCar/FKM
- [1] = Carbon/SilCar/AFLAS (High Temp)
- [2] = SilCar/SilCar/FKM
- [4] = SilCar/SilCar/EPR
- [6] = Carbon/SilCar/EPR

**Reduced Trim Diameter [1]**

- Only applicable to 125SVX. Leave blank for 33SVX-92SVX.
- [C] = 145 mm (full dia.)

**Number of reduced trim impellers [1]**

- The number of reduced trim impellers is indicated after the "/" in the model description. See model list for available options by pump size.

**Number of stages [1-2]**

- Do not include 0 for single digit staging (i.e. 2 not 02)

**Repair Stack [1]**

- [R] = Repair stack

**Product Line [3]**

- [SVX] = e-SV stainless vertical multistage pump with hydrovar X

**Nominal Flow [1-3]**

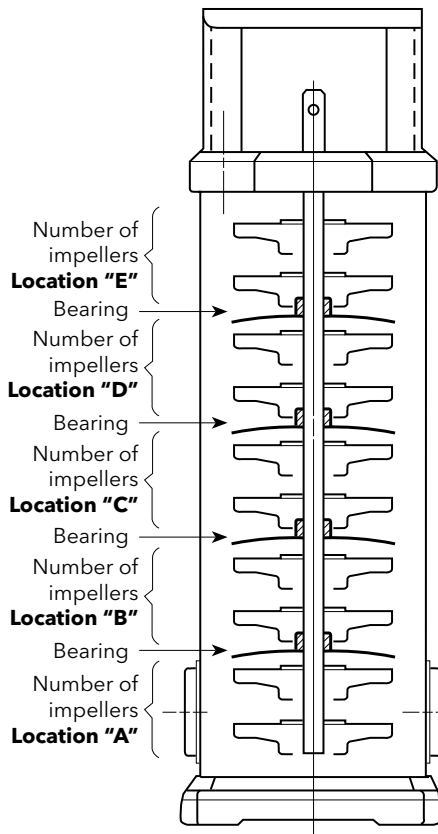
- [33] = 175 GPM
- [46] = 240 GPM
- [66] = 350 GPM
- [92] = 485 GPM
- [125] = 660 GPM



### e-SVX Product Line

### 1 - 125SVX Impellers and Intermediate Bearings Layout

Stages	1SVX					3SVX					5SVX					10SVX				15SVX				22SVX												
	Number of Bushings	A	B	C	D	E	Number of Bushings	A	B	C	D	E	Number of Bushings	A	B	C	D	E	Number of Bushings	A	B	C	D	Number of Bushings	A	B	C	D	Number of Bushings	A	B	C	D			
1																																				
2																								1	1	1						1	1	1		
3																								1	1	2						1	1	2		
4																								1	1	3						1	1	3		
5																								1	1	4										
6																																				
7																																				
8																																				
9																																				
10																																				
11																																				
12																																				
13																																				
14																																				
15																																				
16																																				
17																																				
18																																				
19																																				
20																																				
21																																				
22																																				
23																																				
24																																				
25																																				
26																																				
27																																				
28																																				
29																																				
30	4	2	8	8	7	5	4	2	8	8	7	5																								



Stages	33SV			46SV			66SV		92SV		125SV				
	Number of Bushings	A	B	Number of Bushings	A	B	Number of Bushings	A	Number of Bushings	A	Number of Bushings	A	B	C	D
1	N/A	N/A	N/A	N/A	N/A	N/A	N/A	N/A	N/A	N/A	N/A	N/A	N/A	N/A	N/A
2	N/A	N/A	N/A	N/A	N/A	N/A	N/A	N/A	N/A	N/A	N/A				
3				N/A	N/A	N/A									
4	N/A	N/A	N/A	N/A	N/A	N/A									
5															
6															
7															
8															
9															

N/A = Selection available but bushings are not applicable and bearing positioning is fixed.

The chart on this page is used to locate the correct bearing position(s) on the impeller stack of the e-SV series pumps. To use this chart:

1. Locate the number of stages in the left hand column of the above chart which corresponds to the pump you are working on.
2. Follow the selected row across to the pump size (1SV etc).
3. Under the "A" location, you will find the number of impellers on the bottom of the stack which come before the first bearing.
4. Under the "B" location, you will find the number of impellers which go above the first bearing and below the second bearing (if there is one).
5. Under the "C" location, you will find the number of impellers which go above the second bearing and below the third bearing (if there is one).
6. Under the "D" location, you will find the number of impellers which go above the third bearing.
7. Under the "E" location, you will find the number of impellers which go above the fourth bearing.

### e-SV Product Line Coupling Tables

<b>Coupling Table - includes nuts, bolts and pin</b>			
	140TC	210TC	250TC
1SV	7K3334	7K3336	7K3337
3SV			
5SV			
10SV	7K3339	7K3341	7K3342
15SV			
22SV			
33SV		4L554	4L555
46SV			
66SV			
92SV			
125SV			

<b>Coupling Guard Table - includes screws</b>			
	140TC	210TC	250TC
1SV	PN 4K1006	4K1007	
3SV			
5SV			
10SV	PN 4K1008	PN 4K1009	
15SV			
22SV			
33SV		PN 4L515	
46SV			
66SV			
92SV			
125SV			

<b>Size</b>	<b>Coupling Pin Repair Part Number</b>
1SVX	4L170
3SVX	
5SVX	
10SVX	4L171
15SVX	
22SVX	
33SVX	4L283
46SVX	
66SVX	
92SVX	
125SV	

## Commercial Water

### e-SV Product Line Motor Adapter

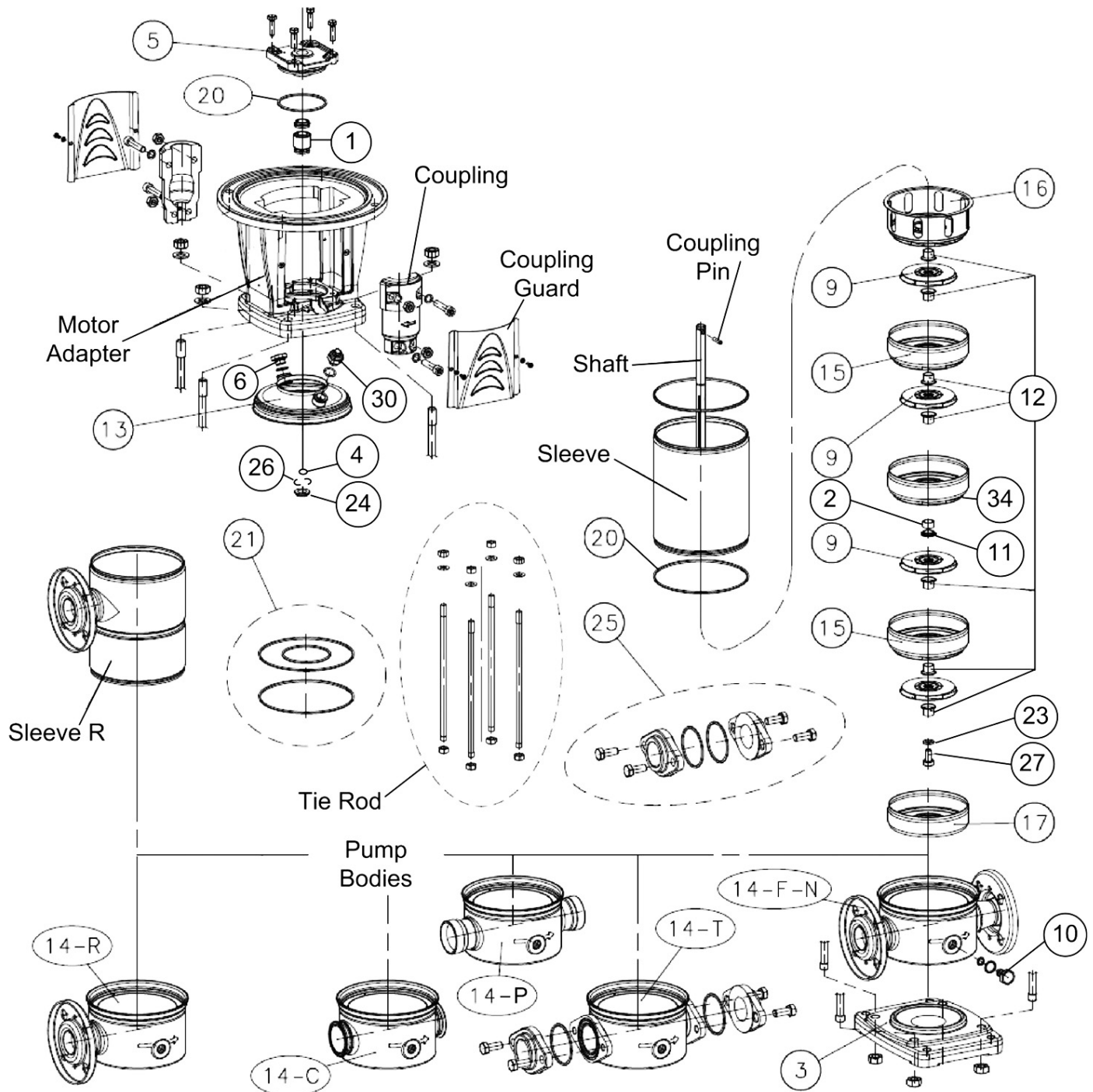
Model	Part	140TC	210TC	250TC
1SVX	Motor Adapter	1K702	1K703	
	Adapter Ring		1K706	1K707
	Motor Hex Cap Screw	13K194	13K435	13L40
	Seal Gland O-Ring	5K516		
3SVX	Motor Adapter	1K702	1K703	
	Adapter Ring		1K706	1K707
	Motor Hex Cap Screw	13K194	13K435	13L40
	Seal Gland O-Ring	5K516		
5SVX	Motor Adapter	1K702	1K703	
	Adapter Ring		1K706	1K707
	Motor Hex Cap Screw	13K194	13K435	13L40
	Seal Gland O-Ring	5K516		
10SVX	Motor Adapter	1K704	1K705	
	Adapter Ring		1K706	1K707
	Motor Hex Cap Screw	13K194	13K435	13L40
	Seal Gland O-Ring	5K516		
15SVX	Motor Adapter	1K704	1K705	
	Adapter Ring		1K706	1K707
	Motor Hex Cap Screw	13K194	13K435	13L40
	Seal Gland O-Ring	5K516		
22SVX	Motor Adapter	1K704	1K705	
	Adapter Ring		1K706	1K707
	Motor Hex Cap Screw	13K194	13K435	13L40
	Seal Gland O-Ring	5K516		
33SVX	Motor Adapter		1L649	
	Motor Adapter Plate			
	Motor Hex Cap Screw		13K104	
	Motor Adapter Hex Cap Screw	13L127		
46SVX	Motor Adapter		1L649	
	Motor Adapter Plate			
	Motor Hex Cap Screw		13K104	
	Motor Adapter Hex Cap Screw	13L127		
66SVX	Motor Adapter		1L649	
	Motor Adapter Plate			
	Motor Hex Cap Screw		13K104	
	Motor Adapter Hex Cap Screw	13L127		
92SVX	Motor Adapter		1L649	
	Motor Adapter Plate			
	Motor Hex Cap Screw		13K104	
	Motor Adapter Hex Cap Screw	13K104		
125SVX	Motor Adapter		1L649	
	Motor Adapter Plate			
	Motor Hex Cap Screw		13K104	
	Motor Adapter Hex Cap Screw	13L127		

' QTY 4 Required

\* QTY 8 Required

### e-SVX Product Line

### Major Components 1SVX - 22SVX



## Commercial Water

### e-SV Product Line Major Components 1SV - 22SV

Miscellaneous Parts							
Item Number	Part Name	1SV	3SV	5SV	10SV	15SV	22SV
2	Shaft Bushing (Bearing)	4L602			4L603		
20	Sleeve O-Ring	5K510 Viton Qty 2 5L88 EPDM Qty 2					
5	Seal Gland	1K669			1K701		
20	Seal Gland O-Ring	5K516 Viton Qty 1 5L512 EPDM Qty 1					
13	Upper Pressed Holder	1L842			1L844		
4	Seal Washer	13L107			13L108		
24	Impeller Locking Cover	4K1025			4K1026		
26	Half Stop Ring	4L245			4L246		
12	Impeller Spacer	4L593		4L594	4L597	4L599	
16	Final Diffuser	3L71		3L73	3L75	3L77	
	Blank Final Diffuser	3L86			3L87		
15	Diffuser	3L55		3L57	3L59	3L61	
34	Diffuser w/ Bushing (Bearing)	3L63		3L65	3L67	3L69	
34	Blank Diffuser	3L92		3L93	3L94	3L95	
9	Impeller	2L917	2L919	2L921	2L923	2L925	2L927
-	Impeller Substituion Spacer*	4K1021		4K1022	4K1023	4K1024	
11	Bushing Spacer	4K1028		4K1004	4K1005	4L601	
17	Initial Stage	3L79		3L81	3L83	3L85	
23	Initial Stage Washer	13L105			13L106		
27	Impeller Stack Screw	13L95			13L96		
-	Tie Rod Nuts Qty 4	13L98 Qty 1			13K428 Qty 4		
-	Tie Rod Washers Qty 4	13L100 Qty 4			13L21 Qty 1		
25	T Config Counter Flange	6L30			6L57		
-	Coupling Shim				4L242		
-	Fill Funnel				4L247		
21	Complete O-Ring Kit	5K517 Viton 5K518 EPDM			5K519 Viton 5K520 EPDM		

\* Used in place of impeller when pump is destaged.

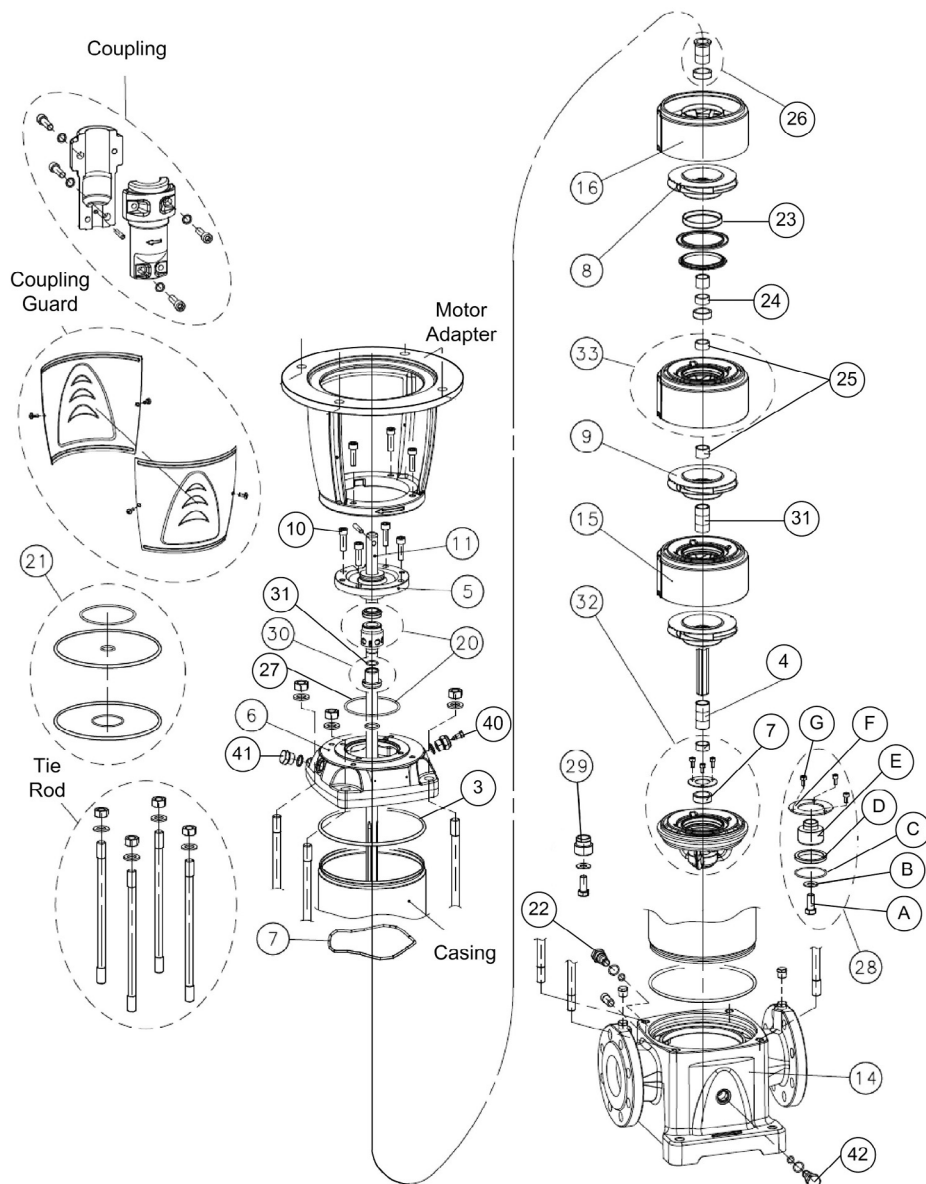
Pump Bodies							
Item Number	Flange Connection	1SV	3SV	5SV	10SV	15SV	22SV
14	F	1L656		1L661			
	N	1L657		1L662			
	G	1L664		1L665			
	R,W,X,Y	1L658		1L663			
	T	1L655		1L659			
	P	1L840		1L660			
	C	1L850		1L851			
Pump Bases							
Item Number	Flange Connection	1SV	3SV	5SV	10SV	15SV	22SV
3	F	1K710		1K712			
	N						
	R,W,X,Y						
	C	1K709		1K711			
	T						
	P						
	G	N/A					
Mechanical Seals *							
Item Number	Seal Type	1SV	3SV	5SV	10SV	15SV	22SV
1	0 Seal Car/SilCar/Viton	10K168		10K169			
	1 Seal Car/SilCar/AFLAS	10K218		10K219			
	2 Seal SilCar/SilCar/Viton	10K172		10K173			
	4 Seal SilCar/Silcar/EPDM	10K174		10K175			
	6 Seal Car/Silcar/EPDM	10K170		10K171			

\* Seal Kits contain (1) seal gland o-ring and (2) casing o-rings.

Vent Plug with O-Ring							
Item Number	Elastomer Type	1SV	3SV	5SV	10SV	15SV	22SV
30	Viton				6L19		
	EPDM				6L55		
Fill Plug with O-Ring							
Item Number	Elastomer Type	1SV	3SV	5SV	10SV	15SV	22SV
6	Viton				6L60		
	EPDM				6L59		
Drain Plug with O-Ring							
Item Number	Elastomer Type	1SV	3SV	5SV	10SV	15SV	22SV
10	Viton	6L17		6L18			
	EPDM	6L23		6L24			
Opt. Victaulic Mating Components		1SV	3SV	5SV	10SV	15SV	22SV
Victaulic Coupling		4L194		4L195			
Victaulic Threaded Coupling		4L196		4L197			
Replacement O-Ring for Oval Flange		1SV	3SV	5SV	10SV	15SV	22SV
		5K415		5L108			

3/8" BSP with 1/4" NPT Plug Connection							
4K536							

### e-SVX Product Line Major Components 33SVX - 92SVX



Pump Bodies					
Item Number	Flange Connection	33SV	46SV	66SV	92SV
14	G Class 125	1L640	1L642	1L644	
	G Class 250	1L641	1L643	1L645	
	N Class 150	1L634	1L636	1L638	
	N Class 300	1L635	1L637	1L639	

Mechanical Seal (Standard) *					
Item Number	Seal Type	33SV	46SV	66SV	92SV
20	0 Seal Car/SilCar/Viton			10L38	
	2 Seal SilCar/SilCar/Viton			10L39	
	4 Seal SilCar/SilCar/EPR			10L37	
	6 Seal Car/SilCar/EPR			10L40	
	7 Cartridge Seal Car/SilCar/Viton			10K163**	
	8 Cartridge Seal SilCar/SilCar/EPDM			10K166**	

Vent Plug with O-Ring					
Item Number	Elastomer Type	33SV	46SV	66SV	92SV
40	Viton			6L53	
	EPDM			6L49	

Fill Plug with O-Ring					
Item Number	Elastomer Type	33SV	46SV	66SV	92SV
41	Viton			6L52	
	EPDM			6L48	

Drain Plug with O-Ring					
Item Number	Elastomer Type	33SV	46SV	66SV	92SV
42	Viton			6L54 (qty. 2)	
	EPDM			6L50 (qty. 2)	

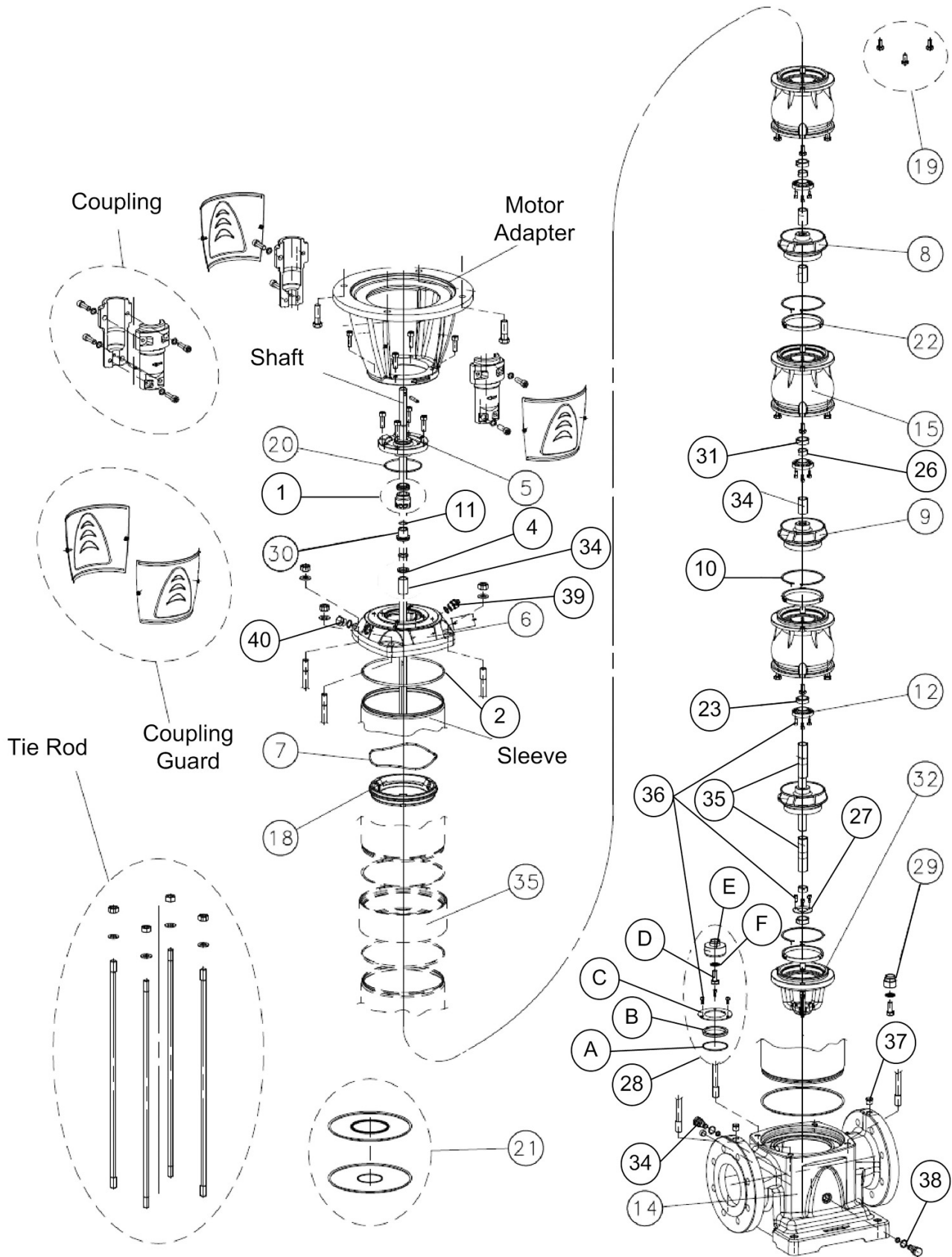
\*For alternative seal options, please see pg. 17 \*\*Cartridge seals come with alternate seal housing and are not interchangeable with standard seals.

## Commercial Water

### e-SV Product Line Major Components 33SV - 92SV

Miscellaneous Parts					
Item Number	Part Name	33SV	46SV	66SV	92SV
6	Pump Head - G	1L632		1L633	
	Pump Head - N	1L630		1L631	
5	Seal Housing - G	1L629			
	Seal Housing - N	1L628			
10	Seal Housing Screw	13L127 (quantity 4)			
28A	Impeller Bolt	13L109			
28B	Impeller Washer	13L129			
26	Final Spacer	4L509			
31	Impeller Spacer	4L511			
4	Lower Impeller Spacer	-		4L512	
30	Mechanical Seal Shaft Sleeve	4L531			
31	Impeller Stop Ring	4L550			
7	Diffuser Spring	4L551		4L552	
16	Final Stage Diffuser	3L42		3L43	
15	Carbon Bearing Diffuser	3L44	3L45	3L46	3L47
33	Tungsten Carbide Diffuser	3L48	3L49	3L50	3L51
25	Shaft Bushing Spacer	4L510 (quantity 2)			
24	Tungsten Carbide Bushing	4L514			
23	Impeller/Diffuser Wear Ring (qty. 5)	15L47	15L48	15L49	15L50
32	Lower Bracket Assembly - G	15L39	15L40	15L41	15L42
	Lower Bracket Assembly - N	15L35	15L36	15L37	15L38
28	Complete Thrust Piston Assembly	15K51	15K52	15K53	
28E	Piston	4L494	4L495	4L496	
28D	Piston Seal	4L547	4L548	4L549	
28F	Retaining Plate	4L506	4L507	4L508	
22	Plug, 33-92SV w/piston	6L47			
28G	Hex Cap Screws	13L114 (quantity 3)			
7	Tungsten Carbide Bushing	4L514			
-	Complete Non-Piston Assembly	15K54			
29	Impeller Stack Bushing	4I513			
22	Plug, 33-92SV w/o Piston	6L51			
9	Full Diameter Impeller	2L899	2L900	2L901	2L902
8	Reduced Diameter Impeller	2L903	2L904	2L905	2L906
-	Tie Rod Washer	13K307			
-	Tie Rod Hex Nut	13K366			
-	Shim Fork	4L242			
21	Complete O-Ring Kit - EPDM	5K374	5K375	5K378	
	Complete O-Ring Kit - Viton	5K376	5K377	5K379	
27	Seal Housing O-Ring	5K404 Viton 5K390 EPDM			
-	Mech. Seal Sleeve O-Ring	5K401 Viton 5K387 EPDM			
3	Casing O-Ring	5K407 Viton 5K393 EPDM		5K408 Viton 5K394 EPDM	
28C	Piston O-Ring	5K398 Viton 5K384 EPDM	5K399 Viton 5K385 EPDM	5K400 Viton 5K386 EPDM	

### e-SVX Product Line Major Components 125SVX





## Commercial Water

### e-SV Product Line Major Components 125SV

Item Number	Part Name	125SV	
		304	316
28D	Piston	4L496	
28B	Piston Gasket	4L549	
28A	Piston O-Ring	5K400 Viton 5K386 EPDM	
28C	Piston Seal Holder	4L508	
34	Piston Hole Plug	6L51	
2	Sleeve O-Ring	5K408 Viton 5K394 EPDM	
5	Seal Housing	1L629	1L628
20	Seal Gland O-Ring	5K404 Viton 5K390 EPDM	
10	Diffuser Wear Ring Support	4L624	4K1011
7	Diffuser Stack Spring	4L552	
6	Upper Head	1L633	1L631
30	Mechanical Seal Bushing	4L531	4L672
26	Shaft Bushing Tung. Carb.	4L514	
11	Impeller Stop Ring	4L550	
31	Bushing Carb. Tung.	4L514	
20	Seal O-Ring	5K401 Viton 5K387 EPDM	
27	Bearing Holder	4L660	
23	Diffuser Bushing	4L666	
18	Adapter Ring	1K715	1K716
15	Diffuser	3K81	3K82
22	Diffuser Wear Ring	4K1014	4K1013
12	Bushing Locking Cover	4K1012	
9	C Impeller 145mm	2K1231	2K1233
8	A Impeller 141mm	2K1235	2K1236
	B Impeller 136mm	2K1232	2K1234
29	Initial Impeller Spacer	4L513	
34	Intermediate Impeller Spacer	4K1017	
35	Impeller Spacer	4K1016	
4	Final Impeller Spacer	4K1015	
36	Bushing / Piston Screw	13L114	
32	Bearing Spider	1K713	1K714
28F	Initial Stage Washer	13L129	
28D	Impeller Stack Screw	13L109	
-	Tie Rod Nuts	13K366	
-	Tie Rod Washers	13K307	
19	Diffuser Screw	13K429	
-	Initial Diffuser Anti Rotation Screw	13K418	
-	Coupling Shim	4L242	
-	Fill Funnel	4L247	
21	Complete O-Ring Kit - EPDM	5K378	
	Complete O-Ring Kit - Viton	5K379	

Pump Bodies			
Item Number	Part Name	125SV	
		304	316
14	G Pump Body Class 125	1L666	
	G Pump Body Class 250	1L667	
	N Pump Body Class 150	1L668	
	N Pump Body Class 300	1L669	

Mechanical Seals		
1	0 Seal Car/SilCar/Viton	10L38
	2 Seal SilCar/SilCar/Viton	10L39
	4 Seal SilCar/SilCar/EPR	10L37
	6 Seal Car/SilCar/EPR	10L40
	7 Cartridge Seal Car/SilCar/Viton	10K163**
	8 Cartridge Seal SilCar/SilCar/EPDM	10K166**
	Cartridge Seal NPT Plug	6K162

\*\*Cartridge seals come with alternate seal housing and are not interchangeable with standard seals.

Mechanical Seals (Alternative) Advanced Rotating Bellows		
1	0 Seal Car/SilCar/Viton	10K199
	2 Seal SilCar/SilCar/Viton	10K200
	4 Seal SilCar/SilCar/EPDM	10K198
	6 Seal Car/SilCar/EPDM	10K197

\*Please contact Factory for lead-time

Vent Plug with O-Ring		
39	Elastomer Type	125SV
	Viton	6L53
	EPDM	6L49

Fill Plug with O-Ring		
40	Elastomer Type	125SV
	Viton	6L52
	EPDM	6L48

Drain Plug with O-Ring		
38	Elastomer Type	125SV
	Viton	6L54 (qty. 2)
	EPDM	6L50 (qty. 2)

Flange Plug		
37	3/8" NPT 316	6L58 (qty. 2)

### e-SV Product Line Shafts

Stage	Shafts										
	1SV	3SV	5SV	10SV	15SV	22SV	33SV	46SV	66SV	92SV	125SV
1							4L516	4L516	4L525	4L525	4L614
2					4K1103	4K1103	4L517	4L517	4L526	4L526	
3					4K1105	4K1105		4L518			
4				4K1104	4K1107	4K1107	4L519	4L519			
5				4K1106			4L520				
6											
7					4K1113	4K1113					
8				4K1110							
9					4K1117	4K1117					
10				4K1112							
11			4K1059								
12					4K1123	4K1123					
13											
14					4K1127						
15			4K1067								
16				4K1120							
17											
18		4K1066									
19											
20				4K1126							
21			4K1079								
22											
23											
24											
25		4K1077									
26											
27			4K1091								
28											
29											
30	4K1085	4K1085									

## Commercial Water

### e-SV Product Line Casings

Stage	Shafts										
	1SV	3SV	5SV	10SV	15SV	22SV	33SV	46SV	66SV	92SV	125SV
1							4L532	4L532	4L541	4L541	1L845
2					1K781	1K781	4L533	4L533	4L542	4L542	
3					1K783	1K783		4L534			
4				1K782	1K785	1K785	4L535	4L535			
5				1K784			4L536				
6											
7					1K791	1K791					
8				1K788							
9					1K795	1K795					
10				1K790							
11			1K736								
12					1K801	1K801					
13											
14					1K805						
15			1K744								
16				1K798							
17											
18		1K743									
19											
20				1K804							
21			1K756								
22											
23											
24											
25		1K754									
26											
27			1K768								
28											
29											
30	1K762	1K762									

### R Config Casing

Stage	1SV	3SV	5SV	10SV	15SV	22SV	Stage	1SV	3SV	5SV	10SV	15SV	22SV
1							16				1L800		
2							17						
3							18		1L749				
4					1L787	1L787	19						
5							20				1L806		
6							21			1L762			
7					1L793	1L793	22						
8				1L790			23						
9					1L797		24						
10				1L792	1L799		25		1L760				
11							26						
12					1L803	1L803	27			1L774			
13							28						
14							29						
15			1L750				30	1L768	1L768				

### e-SV Product Line Casings

Stage	Shafts										
	1SV	3SV	5SV	10SV	15SV	22SV	33SV	46SV	66SV	92SV	125SV
1							4L497	4L497	4L585	4L585	1L868
2					1L812	1L812	4L498	4L498	4L586	4L586	
3					1L814	1L814		4L499			
4				1L813	1L816	1L816	4L500	4L500			
5				1L815			4L501				
6											
7					1L822	1L822					
8				1L819							
9					1L826	1L826					
10				1L821							
11			1L688								
12					1L832	1L832					
13											
14											
15			1L696								
16				1L829							
17											
18		1L695									
19											
20				1L835							
21			1L708								
22											
23											
24											
25		1L706									
26											
27			1L720								
28											
29											
30	1L714	1L714									

### e-SV Product Line Tie Rods

Stage	Shafts					
	1SV	3SV	5SV	10SV	15SV	22SV
1						
2					4K947	4K947
3					4K949	4K949
4				4K948	4K951	4K951
5				4K950		
6						
7					4K957	4K957
8				4K954		
9					4K961	4K961
10				4K956		
11			4K839			
12					4K967	4K967
13						
14					4K971	
15			4K847			
16				4K964		
17						
18		4K846				
19						
20				4K970		
21			4K859			
22						
23						
24						
25		4K857				
26						
27			4K871			
28						
29						
30	4K865	4K865				

### e-SV Product Line Tie Rods

Stage	Shafts										
	1SV	3SV	5SV	10SV	15SV	22SV	33SV	46SV	66SV	92SV	125SV
1							4L557	4L557	4L570	4L570	4K1029
2					4K976	4K976	4L558	4L558	4L571	4L571	
3					4K978	4K978		4L559			
4				4K977	4K980	4K980	4L560	4L560			
5				4K979			4L561				
6											
7					4K986	4K986					
8				4K983							
9					4K990	4K990					
10				4K985							
11			4K902								
12					4K996	4K996					
13											
14					4K1000						
15			4K910								
16				4K993							
17											
18		4K909									
19											
20				4K999							
21			4K922								
22											
23											
24											
25		4K920									
26											
27			4K934								
28											
29											
30	4K928	4K928									

## Commercial Water

### e-SV Product Line Horizontal Mounting

Model	Shims by frame size for ALL CONFIGS EXCEPT R		
	140TC	210TC	250TC
1SV	13K249		
3SV	13K249	13K248	
5SV	13K249	13K248	
10SV	13K431	13K249	-
15SV	13K431	13K249	-
22SV	13K431	13K249	-
33SV	-	9K441	9K442
46SV	-	9K441	9K442
66SV	-	9K441	9K442
92SV	-	9K441	9K442

Model	Shims by frame size for R CONFIG ONLY		
	140TC	210TC	250TC
1SV	13K249		
3SV	13K249	13K248	
5SV	13K249	13K248	
10SV	13K249	13K248	13K346
15SV	13K249	13K248	13K346
22SV	13K249	13K248	13K346
33SV			
46SV			
66SV			
92SV			

### Replacement Kits by Motor Type

Motor Type	Motor Code	Frame	HP	Voltage	Motor+Drive (Item 1)	Drive Only (Item 2)	Motor Only (Item 3)
EXM143-145TC/3.040BH2	130635131	143-145TC	4	200-240	100635131	KL55ANA	KL60AFM
EXM143-145TC/4.040BH2	130635130		4		100635130		KL60AFQ
EXM143-145TC/4.055BH2	130635250		5.5	380-480	100635250		KL60AH8
EXM143-145TC/4.075BH2	130635370		7.5		100635370		KL60AFR
EXM213-215TC/3.075CH2	130636091	213-215TC	7.5	200-240	100636091	KL55ANC	KL60AGA
EXM213-215TC/4.075CH2	130636090		7.5		380-480		100636090
EXM213-215TC/4.100CH2	130636210		10	100636210			KL60AKR
EXM213-215TC/4.150CH2	130636330		15	100636330	KL60AKT		
EXM254-256TC/3.150DH2	130636811	254-256TC	15	200-240	100636811	KL55ANE	KL60AGZ
EXM254-256TC/3.200DH2	130636931		20		100636931		KL60AG1
EXM254-256TC/4.150DH2	130636810		15	380-480	100636810		KL60AGY
EXM254-256TC/4.200DH2	130636930		20		100636930		KL60AG0
EXM254-256TC/4.250DH2	130637050		25		100637050		KL60AG2
EXM254-256TC/4.300DH2	130637170		30		100637170		KL60AK4

# Xylem |'zīləm|

- 1) The tissue in plants that brings water upward from the roots;
- 2) a leading global water technology company.

We're a global team unified in a common purpose: creating advanced technology solutions to the world's water challenges. Developing new technologies that will improve the way water is used, conserved, and re-used in the future is central to our work. Our products and services move, treat, analyze, monitor and return water to the environment, in public utility, industrial, residential and commercial building services settings. Xylem also provides a leading portfolio of smart metering, network technologies and advanced analytics solutions for water, electric and gas utilities. In more than 150 countries, we have strong, long-standing relationships with customers who know us for our powerful combination of leading product brands and applications expertise with a strong focus on developing comprehensive, sustainable solutions.

**For more information on how Xylem can help you, go to [www.xylem.com](http://www.xylem.com)**

Learn more about  
e-SVX Smart Pumps:



Xylem Inc.  
2881 East Bayard Street Ext., Suite A  
Seneca Falls, NY 13148  
Phone: (800) 453-6777  
Fax: (888) 322-5877  
[www.xylem.com/goulds](http://www.xylem.com/goulds)

Xylem and Hydrovar are registered trademarks of Xylem Inc. or one of its subsidiaries. Goulds is a registered trademark of ITT Manufacturing Enterprises LLC and is used under license. All other trademarks or registered trademarks are property of their respective owners.

© 2024 Xylem Inc. GWT-e-SVX PL-113 R1 March 2024