



HYPACK® Network Dongle

By John Lindberg

By now most HYPACK® customers who are currently on the Maintenance Plan have received their HYPACK® 2009a CDs and brand new dongles.

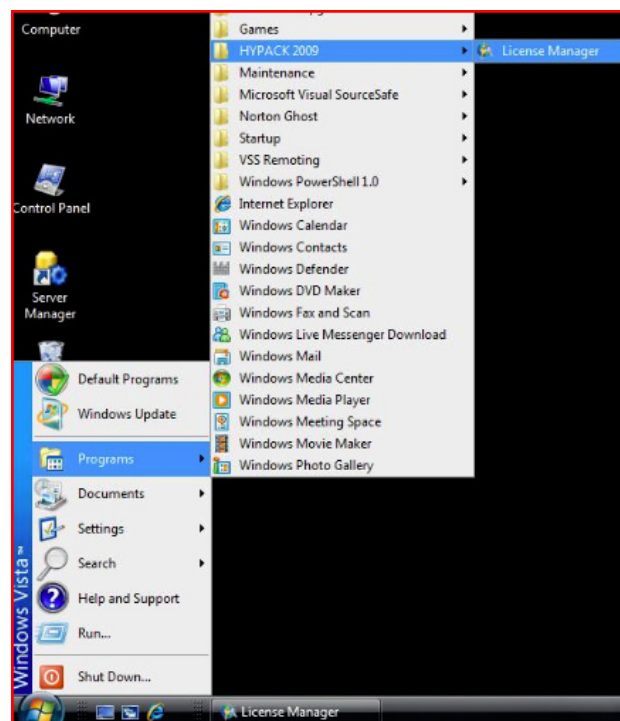
One of the features of this combination is the ability to have a network license. In other words, a single dongle can be installed on a central server, and allow multiple users to run HYPACK®, depending on the number of licenses programmed on the dongle. This document describes the installation and setup of a network dongle.

HYPACK® SERVER

The **HYPACK® server** is the computer where the HYPACK® dongle will reside. You can either install HYPACK® 2009a on the server, or just install hylock.exe. Hylock.exe is located in the HYPACK 2009\Support folder, or can be downloaded from our website.

1. **Install hylock.exe on the server.** It will create a HYPACK® 2009 menu item under START > PROGRAMS. If HYPACK® 2009a is installed on the server there is no need to run hylock.exe.
2. **Attached the key to the server PC.**
3. **Run the License Manager on the server.** You can do this by going to START>PROGRAMS>HYPACK 2009>LICENSE MANAGER as shown in Figure 1:

FIGURE 1. Launching the License Manager from the Windows® Start Menu

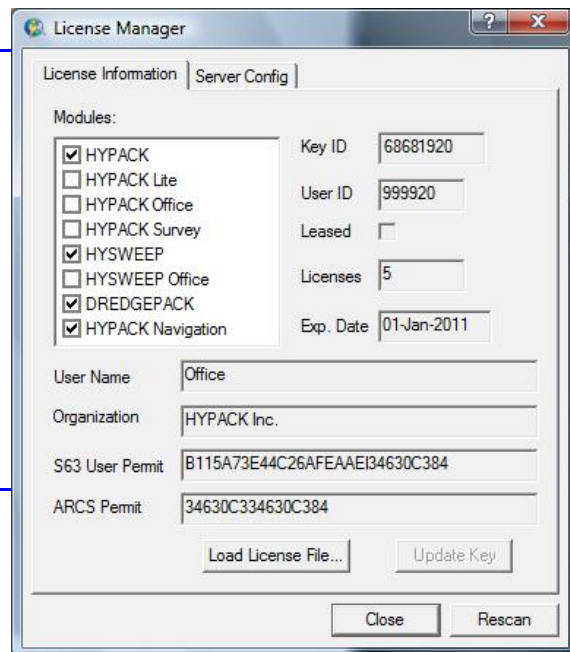
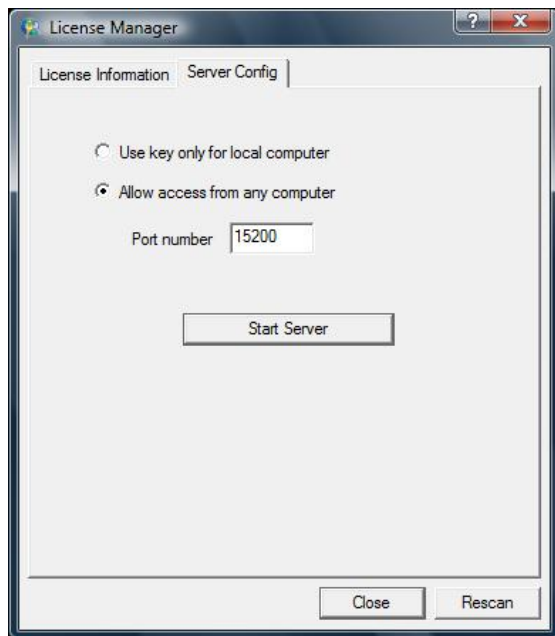


The License Manager dialog will appear with all of your license info. It should look something like Figure 2:

FIGURE 2. *License Manager*

4. **Note the USER ID.** You will need it when you configure each workstation.
5. **Click on the SERVER CONFIG tab.**
6. **Choose ALLOW ACCESS FROM ANY COMPUTER.**
7. **Enter a PORT NUMBER.** Figure 3 shows that tab with the default value of 15200 which is what I am using in this example.

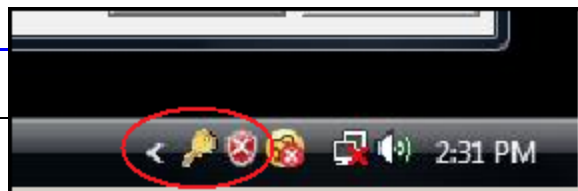
FIGURE 3. *Configuring the Server*



8. **Click on START SERVER.** The Server should be set to go once you see the “key” icon on the lower-right section of the Taskbar. You are now ready to get the workstations up and running.

FIGURE 4. *Server Key Icon on the Taskbar*

NOTE: Be sure your firewall is unblocking the port you are using.



WORKSTATIONS

A **workstation** is a computer on which you plan to use HYPACK®.

1. **Install HYPACK® on each workstation.**
2. **Run the License Manager on each Workstation.** You can do this by going to START > PROGRAMS > HYPACK 2009 > LICENSE MANAGER as shown below. Because there is no key present you will only see REMOTE CLIENT CONFIG tab.

FIGURE 5. *Configuring your HYPACK® Workstation*

3. **Uncheck NEVER TRY TO CONNECT TO A REMOTE SERVER.** This will open the other fields on that tab.
4. **Enter server host name or IP address.**
5. **Enter Port number.** I used 15200 in this example.
6. **Enter HYPACK User,** which is USER ID noted from the server.
7. **Click TEST CONNECTION NOW** and if all goes well it should say KEY OK.
If it says KEY FAILED, there must be some firewall or other block.

You should now be able to run HYPACK® from any workstation. The number of licenses shown in the License Manager will govern how many workstations will be allowed to run HYPACK® at the same time.

