



Vertical and Horizontal Averaging in ADCP Profile

By Ken Aiken

Based a recent request, we've added the ability to do vertical and horizontal averaging to water profiles in the ADCP PROFILE program. Where currents have consistent direction and speeds, either vertically or horizontally, averaging can improve accuracy and create cleaner vector outputs. However, in turbulent conditions, this is less likely to be so.

You can enable the averaging feature in the View Options-Velocity Tab.

- **Vertical averaging** will average the entire water column. Choose this option when the current direction changes across the line.
- **Horizontal averaging** will average the entire line omitting cells below the bottom from the average. Choose this option when the current direction is changes at different depths.

FIGURE 1. View Options - Velocity Tab in the ADCP PROFILE Program

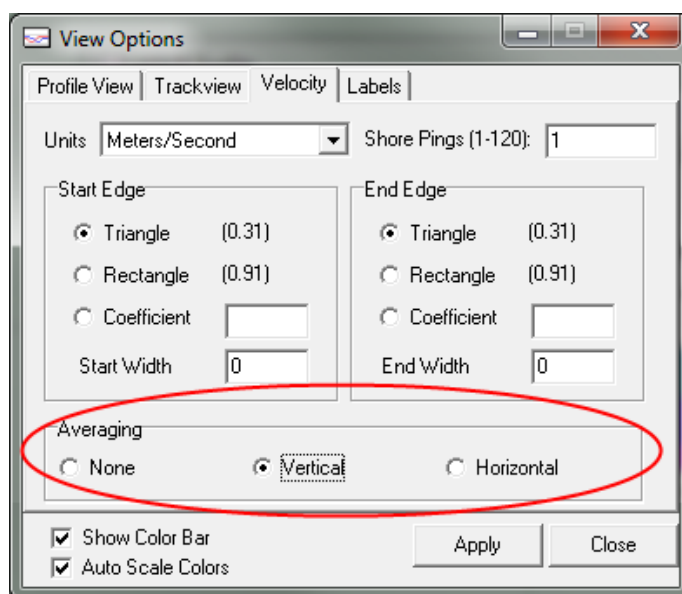


FIGURE 2. Normal Velocity Display

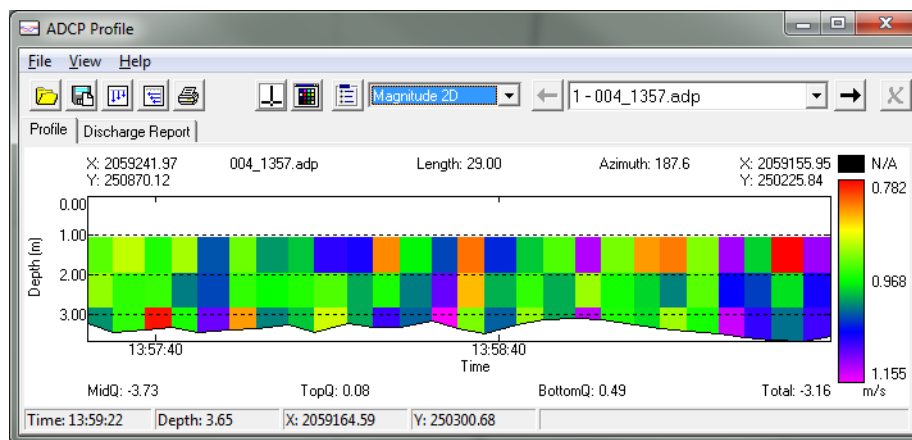


FIGURE 3. Horizontal Averaging

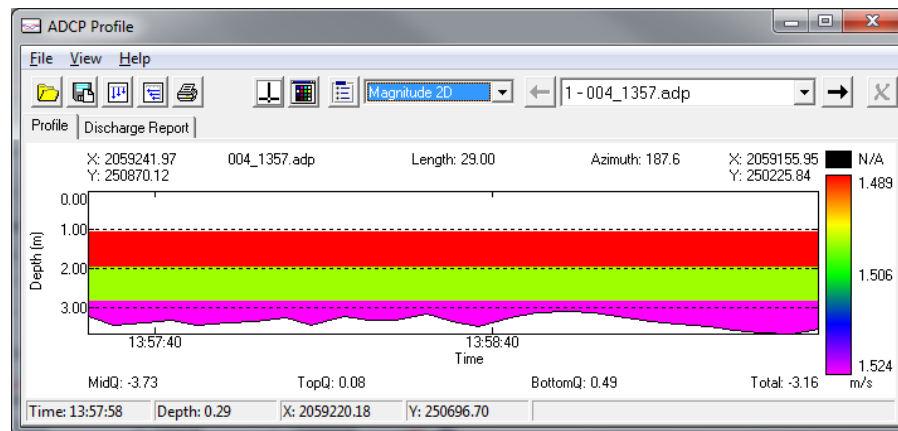


FIGURE 4. Vertical Averaging

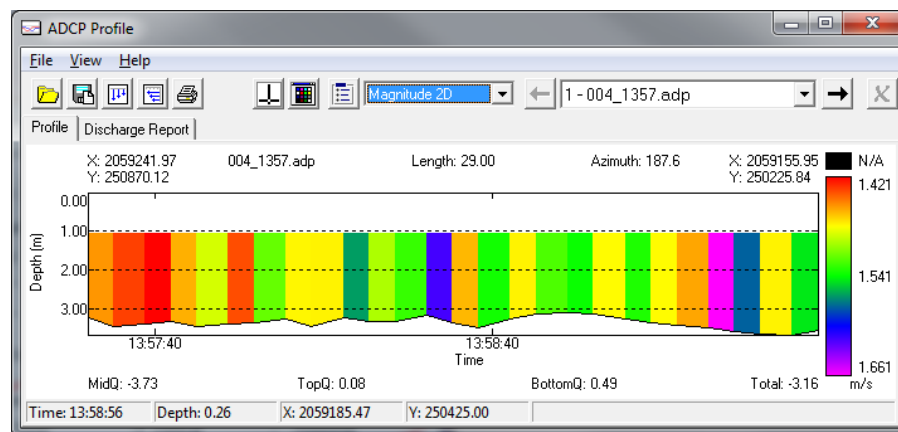


FIGURE 5. 2D DXF Vector Output with Vertical Averaging

