



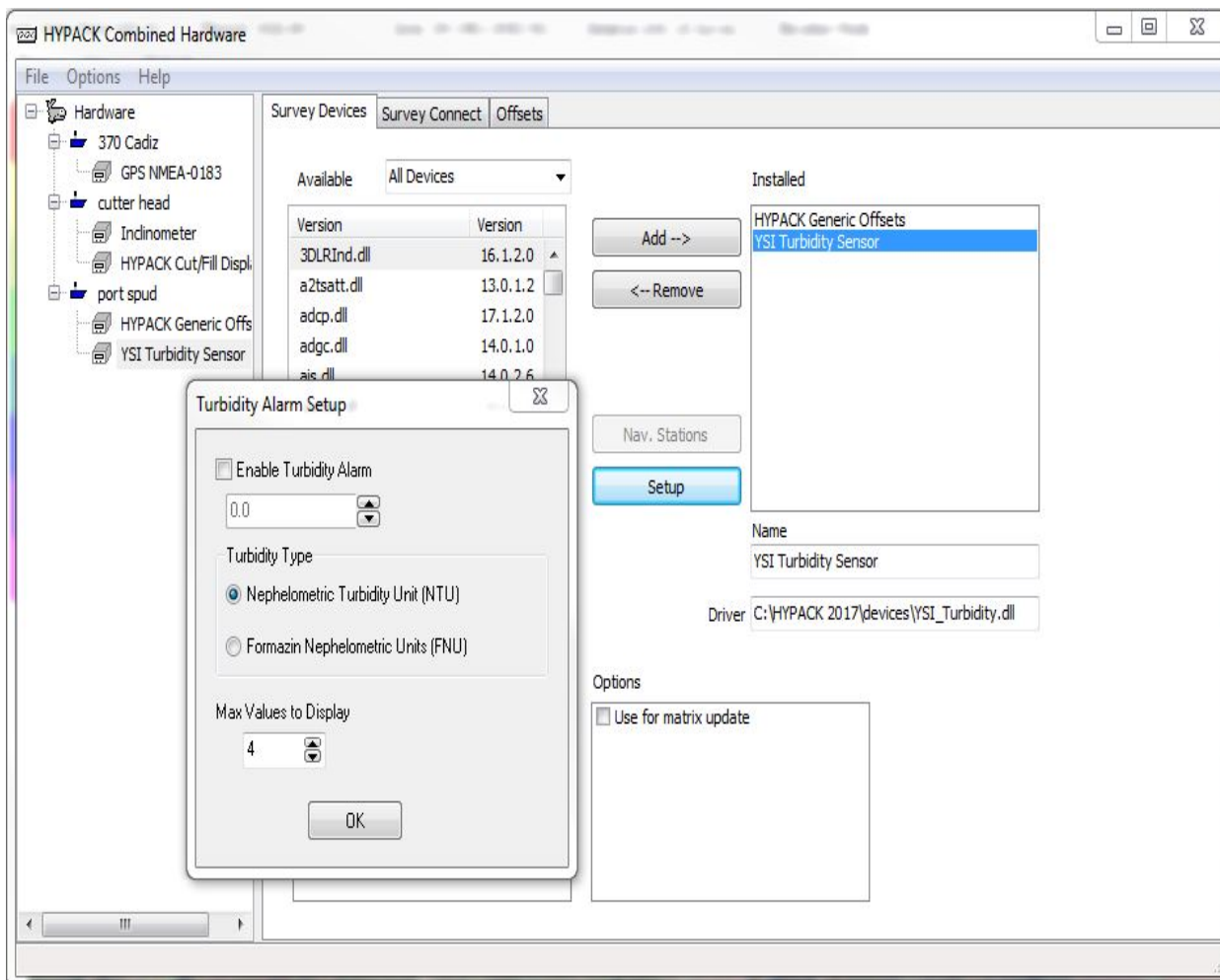
Turbidity Monitoring in DREDGEPACK®

by Bob Glover

DREDGEPACK® now has the ability to record water turbidity, in real time, using the YSI EXO turbidity sensor. Turbidity can be graphed and displayed in its own window within DREDGEPACK®. You may also set a threshold alarm should the turbidity rise beyond specified levels. As more and more dredge contracts call for monitoring water conditions within the dredge bounds, this sensor and its integration with DREDGEPACK®, will certainly become a most useful tool.

Setting up the YSI_Turbidity.dll is very straight forward: select the driver from the list of available drivers and add it to the installed list. Clicking on the setup button, will bring up the driver settings as seen below.

FIGURE 1. Configuring the YSI Turbidity Device Driver



Turbidity type can be selected as either NTU or FNU, along with the maximum number of values to be displayed on screen. You can also configure an alarm to show, should the turbidity rise above the user defined value.

The driver is interfaced using a wireless network connection between the monitor and the computer running DREDGEPACK®. Different sensor options also allow for cell service monitoring and alerts sent directly to your cell phone.

The following figure is a screen capture of the turbidity window open while DREDGEPACK® is in operation real time.

FIGURE 2. Full DREDGEPACK® Display. Turbidity Window upper-right.

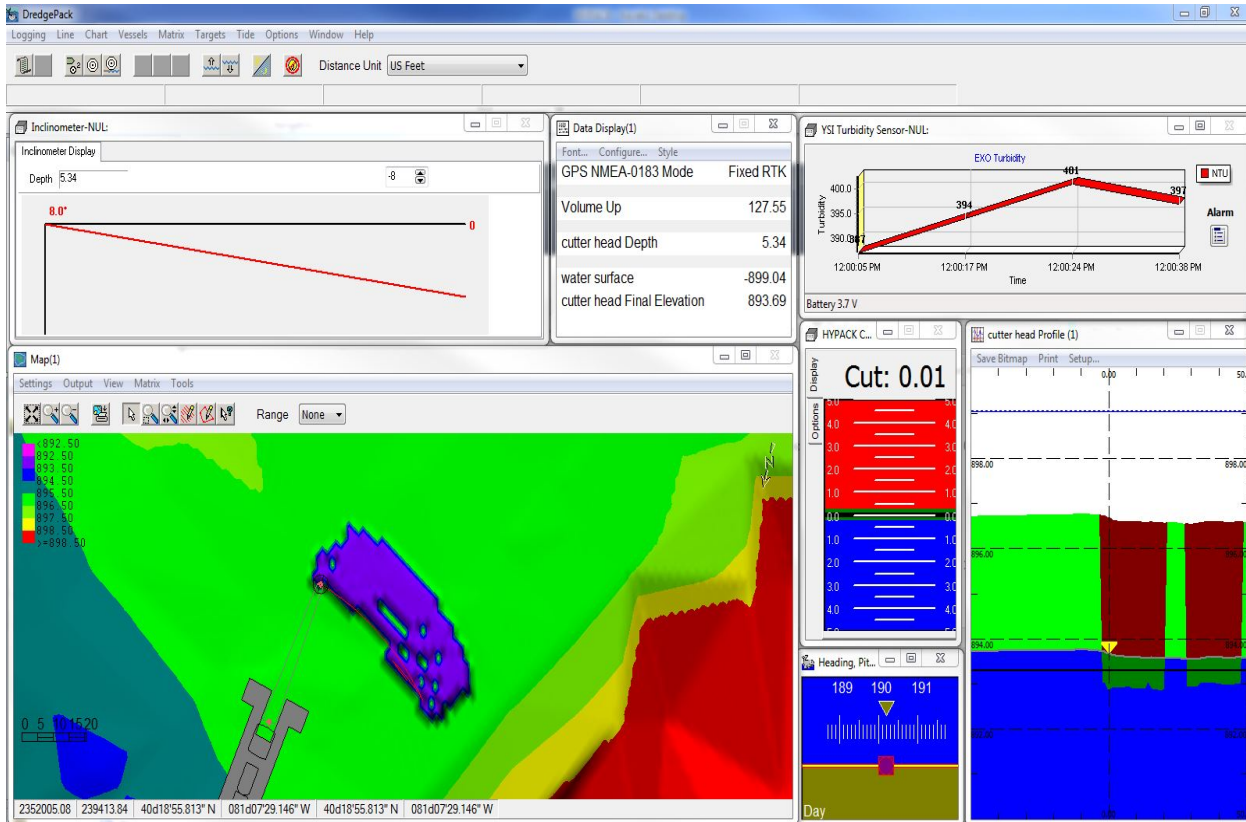
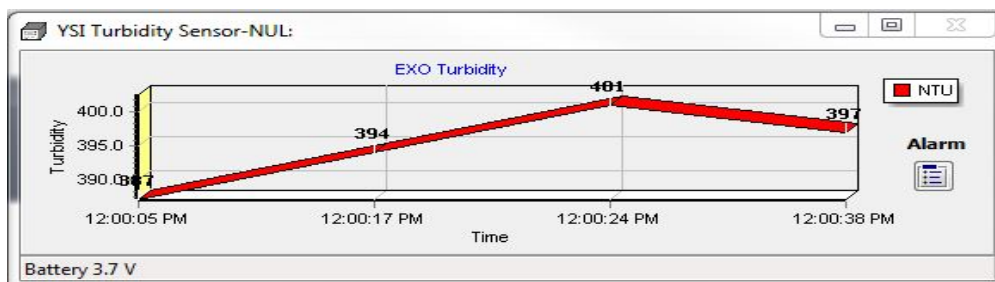


FIGURE 3. A closer View of the YSI EXO Window



Should you have any further questions regarding the interfacing or use of the YSI_Turbidity.dll, please feel free to email Help@HYPACK.com