



**HYPACK**  
a xylem brand

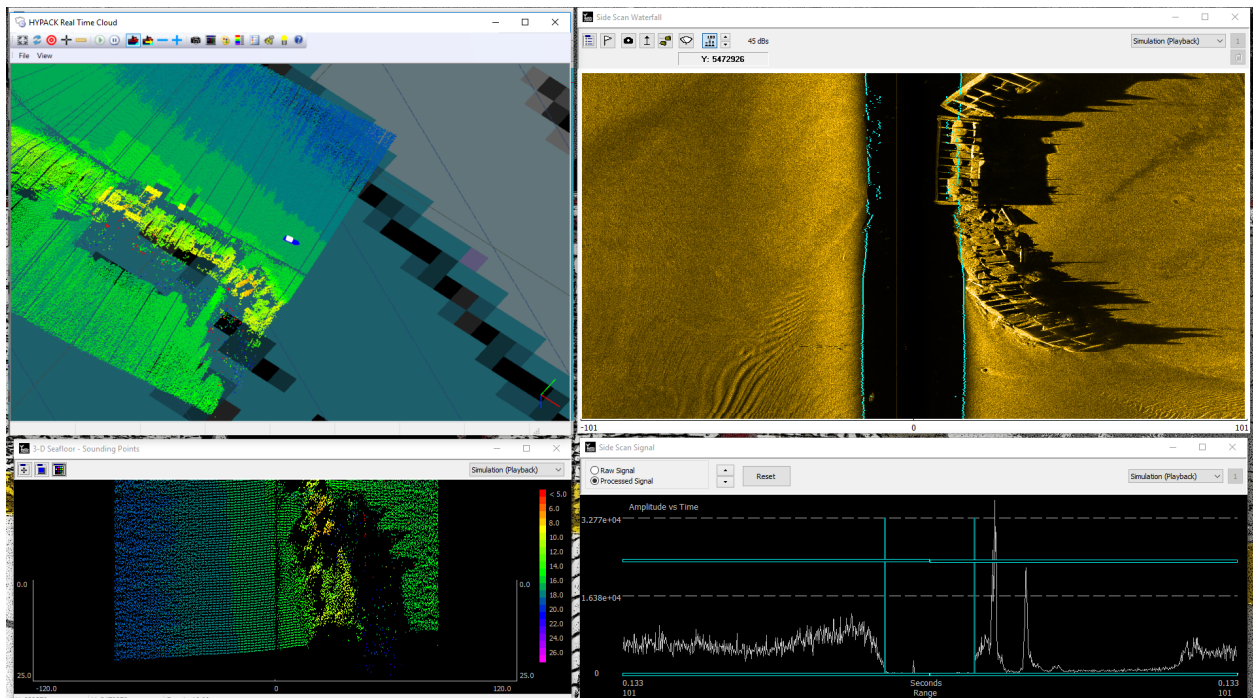
Sounding Better!

## Configuring a Playback Session to Practice Collecting Multibeam or Side Scan Data

By Jerry Knisley

The HYPACK Support team conducts training many times throughout the year. If you aren't familiar with collecting multibeam or side scan data, there is a way to simulate being in the field so that you become familiar with the tools used during collection without actually having to mobilize the boat. Utilizing the simulation mode allows you to gain experience and knowledge about the software.

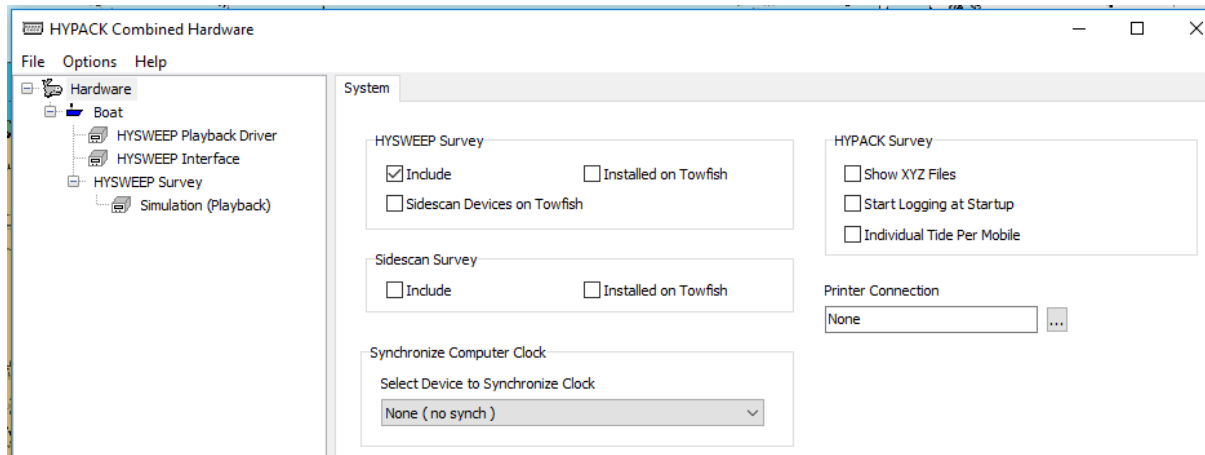
**FIGURE 1.** Side Scan Survey Windows



First, configure the **HARDWARE**. There are two main interfaces regardless of whether this is a multibeam or side scan setup:

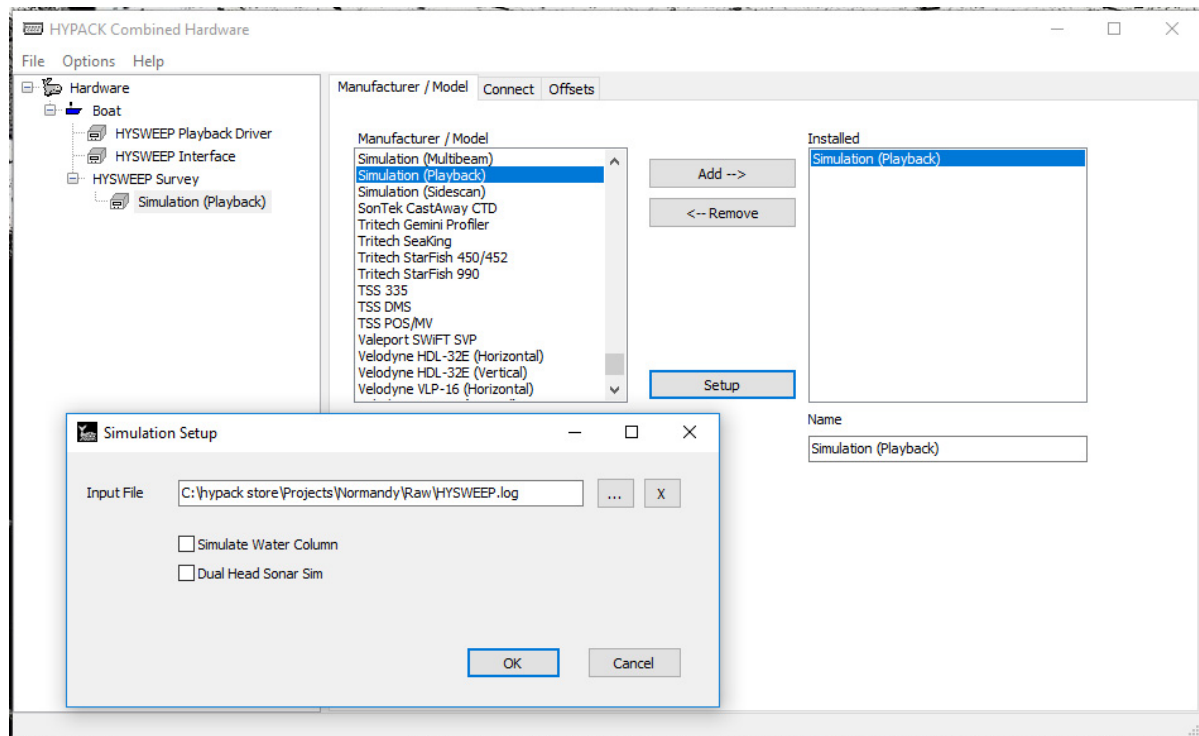
- **HYPACK® HARDWARE**
  - > **HYSWEEP® Playback driver** receives time, position and heading information.
- **HYSWEEP® / SIDE SCAN HARDWARE**
  - > **Simulation ( Playback ) driver** reads and displays sensor information, and passes the time, position and heading to HYPACK® SURVEY, which draws the boat in the map.

**FIGURE 2. HYPACK® HARDWARE Configuration**



In the Simulation driver, you open the Setup dialog to choose the HSX or LOG file to replay.

**FIGURE 3. Configuring the Playback Simulation Driver**



Once the hardware is setup, you can go into the SURVEY program and learn the software without being on the boat. If you use this simulation process, all of the displays that are available in real time can be accessed in the playback mode.