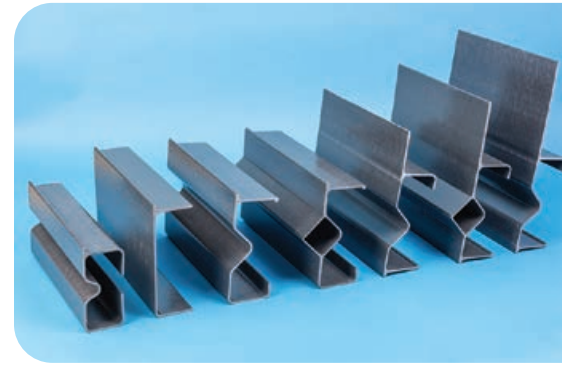


Envirex® Fiberglass Flights for Chain and Scraper Systems



SIGMA PLUS

- Up to 25 feet (7.6 m) in length under normal loadings
- Moment of Inertia is I y-y horizontal (scraping): 2.01 in⁴
- Deflection strength: y-y EI x 10⁶ lbs-in² horizontal = 6.83
- Deflection strength: x-x EI x 10⁶ lbs-in² vertical = 58.92

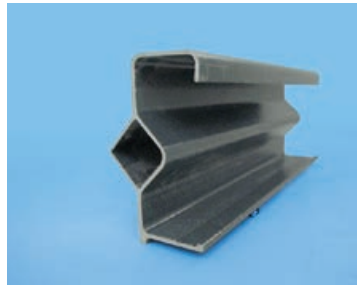


FEATURES AND BENEFITS

- Typical profile size: 3" x 8"
- Material: Pultruded Glass Reinforced Isophthalic Polyester
- Fiberglass design weighs less reducing load stress and wear
- All designs can accommodate up to 15 degrees of angular deflection
- Corrosion resistant extending life

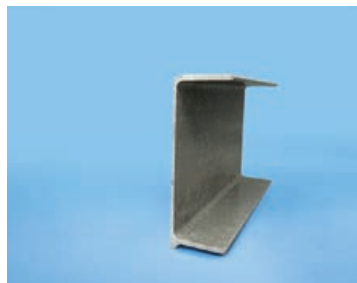
HIGH STRENGTH DIAMOND

- Up to 33 feet (11 m) under normal loadings
- Moment of Inertia is I y-y Horizontal (Scraping): 3.58 in⁴
- Deflection strength: y-y EI x 10⁶ lbs-in² horizontal = 12.13
- Deflection strength: x-x EI x 10⁶ lbs-in² vertical = 65.14



CHANNEL

- Up to 15 feet (4.6 m) in length under normal loadings
- Moment of Inertia is I y-y Horizontal (Scraping): 1.1 in⁴
- Deflection strength: y-y EI x 10⁶ lbs-in² horizontal = 3.77
- Deflection strength: x-x EI x 10⁶ lbs-in² vertical = 51.58



Extend the Useful Life of your Wastewater Treatment Assets

Components and systems age at varying rates with some parts remaining useful while others are in imminent danger of failing. Often, the failure of vulnerable components can trigger larger failures and result in damages and/or compliance issues.



Installation and aftermarket services are available to plant operators and managers to help protect equipment and the investment in utility assets.

EVOQUA CAN HELP

- **Inspect**—Quantitative and qualitative assessment of the condition of components and systems with recommendations from OEM experts
- **Restore**—Rehabilitation of your system to improve operational efficiency and extend life
- **Install**—A single source of responsibility for supply and installation
- **Update**—Component and systems that improve capacity and performance in existing tanks with little or no structural modification

Evoqua's dedicated team of technical experts can help save your plant time and costs with maintenance training, system evaluations, rehabilitation's and retrofit services available.

We will ensure efficient and reliable operation of your equipment and systems to maximize process uptime and equipment life. Our extensive inventory of parts and can provide service for primary and secondary clarifiers, clarifier drives, chain and scraper systems, diffused aeration, high-speed aerators, and sludge digestion equipment. Evoqua is the original equipment manufacturer (OEM) of Envirex®, FMC, Aqua-Lator®, Link-Belt®, Passavant Mammoth Rotors, PFT® and many other brands.



N19W23993 Ridgeview Parkway West, Suite 200, Waukesha, WI 53188

+1 (866) 926-8420 (toll-free) +1 (978) 614-7233 (toll) evoqua.com

Envirex, Aqua-Lator, Passavant Mammoth Rotors, PFT are trademarks of Evoqua Water Technologies LLC, its subsidiaries or affiliates in some countries.

All information presented herein is believed reliable and in accordance with accepted engineering practices. Evoqua makes no warranties as to the completeness of this information. Users are responsible for evaluating individual product suitability for specific applications. Evoqua assumes no liability whatsoever for any special, indirect or consequential damages arising from the sale, resale or misuse of its products.

© 2022 Evoqua Water Technologies LLC Subject to change without notice MU-FLIGHTS-DS-0422