



Municipal Wastewater Authority

BYPASS PUMPING CONTINGENCY PLAN
COMMUNITY SEWER PUMP STATION #5
JANUARY 2017

This Plan Created by Xylem Inc., Featuring Godwin and Flygt Pumps.



MUNICIPAL WASTEWATER AUTHORITY

Bypass Pumping Contingency Plan Community Sewage Pump Station #5 Details

This Contingency Plan has been created to allow the bypass of the Community Sewage Pump Station #5 located at 22 Water Road, Cloud City, CA in the event of incapacitation due to flooding, or mechanical/electrical failure.

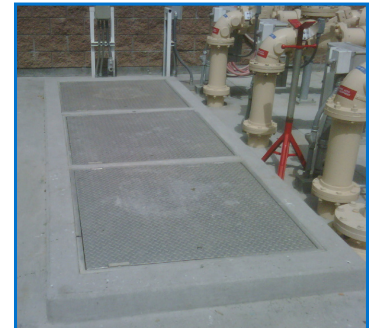
When you have a sanitary sewer overflow, handling it as quickly as possible is a necessity. This Contingency Plan, based on a thorough exam of Community Sewage Pump Station #5, will help you mitigate the problem as quickly as possible. Keep it in a safe place. Also consider adding our first three Emergency Contacts (found on page 4) to your cell phone, so you can reach them right away should the unthinkable become the unavoidable.

PUMP STATION REQUIREMENTS

Duty Point:	1,345 GPM @ 65' TDH
Peak Flow:	1,500 GPM @ 65' TDH
Average Flow:	1,150 GPM @ 65' TDH
Low Flow:	215 GPM @ 65' TDH
Force Main Pressure:	15-20 PSI
Suction Point:	Pump station wet well
Suction Lift:	15'
Discharge Point:	8" 150lb flanged connection on force main
Discharge Distance:	50'
Application:	Suction Lift / Closed System Discharge



FORCE MAIN CONNECTION



WET WELL OPENING

BACKUP PUMPING SPECS

Backup Pump Model:	Godwin CD225M Dri-Prime
Suction Hose Length:	20'
Discharge Hose Length:	60'

SPECIAL NOTES

Regarding community sewage pump station #5

SITE CONDITIONS

- Steep gravel driveway
- Access gate on east side of street

ACCESS POINTS

- Manhole is located behind the lift station
- Draw suction from manhole on east side of fence and discharge into EPC on west side of pump station perimeter

SPECIAL CONSIDERATIONS

- Be aware of overhead power lines
- Lifting equipment needs to be provided by municipality
- Dense residential area and critically silenced pumps required

OTHER NOTES

- Steep gravel driveway
- Access gate on east side of street

EQUIPMENT LIST

Prepared for Cloud City, CA

ITEM	QTY	DESCRIPTION
A	1	Godwin Dri-Prime CD225M Critically Silenced Diesel Pump Primary Unit <ul style="list-style-type: none">• Sound Attenuated Enclosure• 8' 150# Flange Suction and Discharge• John Deere 4045T HFC92 diesel engine• Skid-mounted, 150 gal fuel tank
B	1	GL7 Drop in trailer
C	5	8" x 10' Composite Hose with 150# Flange Fittings
D	2	8" x 10' Black Water Suction Hose with Godwin QD Fittings
E	1	8" Female Godwin QD x 8" 150# Flange Adapter for Critically Silenced Enclosure
F	64	¾" x 4½" Bolt with nut
G	8	8" 150# Flange Gasket
H	1	1" x 15' Leak Off Hose

PUMP STATION LOCATION

In the event you activate this Contingency Plan in response to a sanitary sewer overflow emergency, our people and equipment will meet you at:

Customer:	City Municipal Wastewater Authority
Contact:	Sam Sample
Phone #:	949.555.5555
Location:	22 Water Road, Cloud City, CA
Xylem Contact:	Tom Sample
Mobile Phone #:	310.555.1111

DRIVING DIRECTIONS TO COMMUNITY SEWAGE PUMP STATION #5 CLOUD CITY, CA

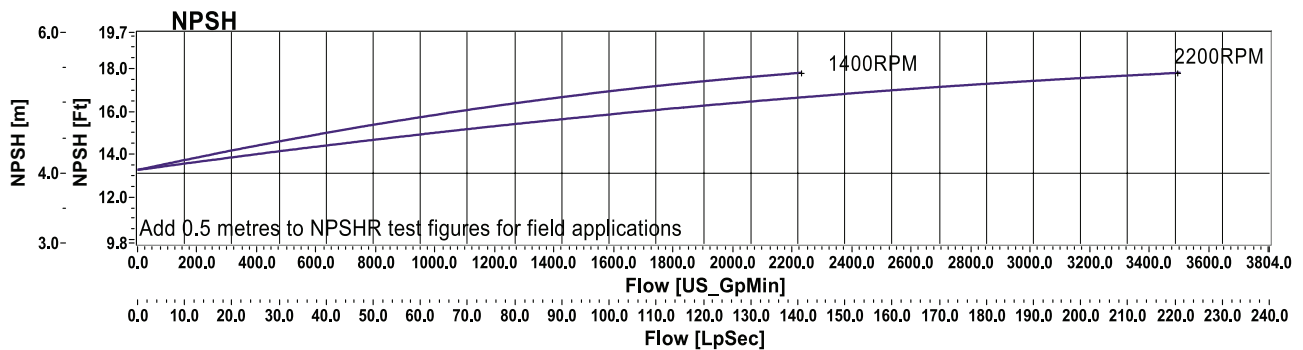
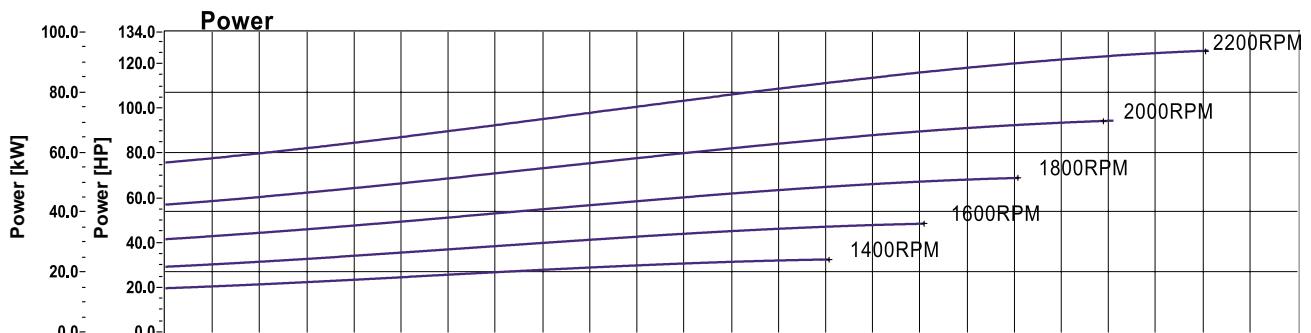
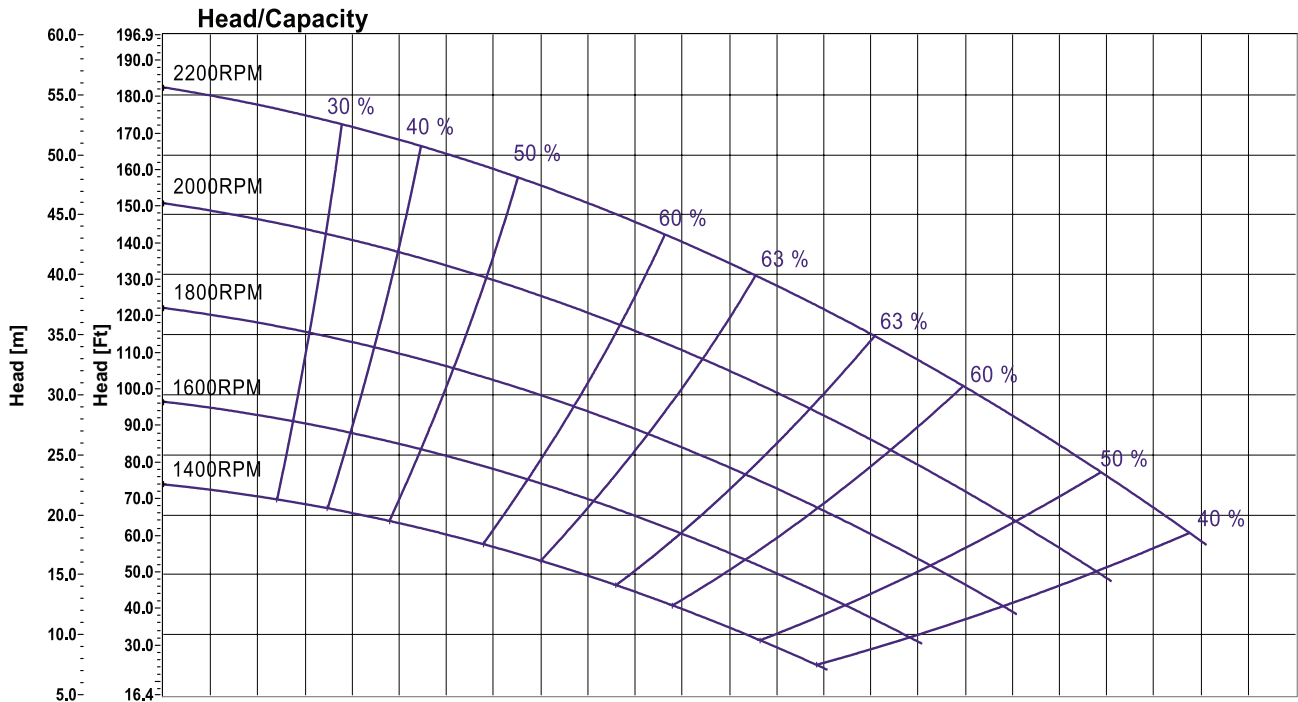
1. I-405 South to Exit 3
2. Straight on Large Avenue
3. Right on Pump Station Way

Total drive time: 47 minutes (without traffic)



This sample SSO Contingency Plan is for a fictitious municipality, but is an accurate representation of what you can expect from your Xylem SSO Contingency Plan.

Pump Type	CD200M/225M
Curve No	CD200M/225M-VARI-25/03/03
Branch Sizes	200 X 200mm
Date	25/03/03
Speed	VARIABLE



Notes

1. Maximum impeller diameter 290mm	4. Add 12% for vee belt drives	7. Published performance is achieved at total suction heads up to 4.57m - 15ft. Where greater reduce performance
2. Minimum impeller diameter 240mm	5. Maximum vee belt speed 2000RPM	
3. Maximum solids handling 75mm diameter	6. Where a compressor is fitted add 2.6kw for small size and 8.25kw for large	

xylem |'zīləm|

- 1) The tissue in plants that brings water upward from the roots;
- 2) a leading global water technology company.

We're a global team unified in a common purpose: creating innovative solutions to meet our world's water needs. Developing new technologies that will improve the way water is used, conserved, and re-used in the future is central to our work. We move, treat, analyze, and return water to the environment, and we help people use water efficiently, in their homes, buildings, factories and farms. In more than 150 countries, we have strong, long-standing relationships with customers who know us for our powerful combination of leading product brands and applications expertise, backed by a legacy of innovation.

For more information on how Xylem can help you, go to www.xylem.com/rental



xylem
Let's Solve Water

Xylem, Inc.
84 Floodgate Road
Bridgeport, NJ 08014
Tel: 800-24-PUMP4
xylem.com/rental

Godwin and Flygt are trademarks of Xylem Inc. or one of its subsidiaries.
© 2017 Xylem, Inc.