



Commercial Building Services

A COMPLETE RANGE OF SOLUTIONS FOR IMPROVED SYSTEM PERFORMANCE

xylem
Let's Solve Water

LET'S APPLY THE
POWER OF **e**





experience

Xylem is a global leader in water technology, with advanced research, innovative design and application expertise that helps our customers solve their most complex water-related challenges. With a broad portfolio including some of the world's leading water, wastewater and HVAC brands, we can provide the most comprehensive offering of products and solutions to the commercial building services industry.

extensive information

Having recognised the demands of the commercial building services market, we are well placed to support specifiers with the selection and specification of equipment. Xylect is an industry leading tool offering up-to-date information and an overview of our extensive range of products. Information can be distributed to members of your project, helping to shorten your lead times. Extensive documentation, such as CAD files, specifications and tender texts required by specifiers, are also available.

exact configuration

Tailored specifically for consultants, sales engineers and specifiers, Loop4U is a selection software designed to identify and configure the ideal Xylem pumping equipment to meet your exact requirements. Loop4U matches the given data against a comprehensive database and presents the results in a list that can be arranged and fine-tuned to provide an exact configuration of the pump.

environmentally engineered

All Xylem products are developed with the environment in mind. We continually strive to produce equipment which boasts superior performance and efficiency characteristics, significantly lowering lifecycle costs and increasing energy savings.



You Can Trust Us

Xylem products and solutions are installed all over the world and probably close to you. We've been chosen because we are able to understand and meet the demands from a modern society focusing on cost efficiency and reliability. Our products help creating comfort and safety in people's life whether they are at home, at work, watching a sports game or staying in 5 star hotels and spas.

Vienna hospital, Vienna, Austria.

Vienna hospital was inaugurated in 2004. Lowara and Vogel products distribute water and keep the temperature at a perfect level throughout the largest hospital in Europe.

Close to 300 in-line and end suction pumps and booster sets are installed here.



Hospital Beatriz Ângelo, Lisbon, Portugal.

Since 2012 this has been a fully Xylem equipped hospital.

Heating and cooling: 125 Lowara FC, e-SV and FH pumps, 92 of them with Hydrovar.

Water supply and irrigation: 3 GHV booster sets. Wastewater: 3 Flygt N3127. Firefighting: 1 Lowara booster set.



State university library, Moscow, Russia.

Since 2004 Lowara products serve the 55.000 m² building complex with indoor climate and fresh water.

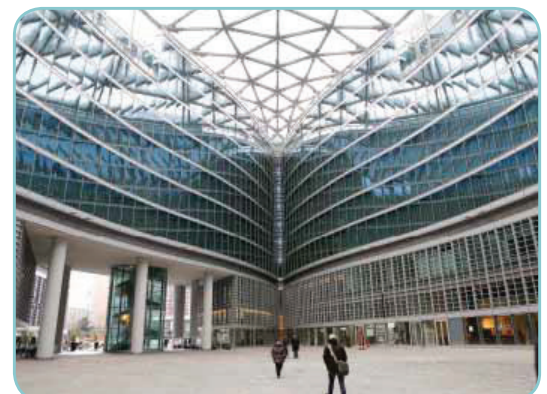
Heating and cooling: FC pumps. Water supply: SV pumps.



Palazzo della Regione Lombardia, Milan, Italy.

The 160 m high building trust Lowara pumps for fresh water and comfortable indoor climate.

Heating and cooling: FC pumps with Hydrovar. Water Supply: GHV booster sets and FH pumps.



These case studies are just a few examples, find more at xyleminc.com

Hermes Park Carrefour, Sofia, Bulgaria.

In 2010 Xylem equipped the 170.000 m² shopping mall, biggest in the Balkans, with the complete pumping need.

Heating and cooling: 185 FH, FC and LS pumps, 85% equipped with Hydrovar. Water supply: 2 GHV booster sets and 10 in-line and end suction pumps. Wastewater: 27 lifting stations. Firefighting: 7 GEN booster sets.



Scarlet Sails apartment complex, Moscow, Russia.

In 2012 Block V in one of the tallest residential building complexes in Moscow was inaugurated. Lowara pumps makes taking a shower a pleasure on all floors.

Heating and cooling: 8 FC with Hydrovar. Water supply: 7 e-SV booster sets with Hydrovars.



Burj Khalifa, Dubai, UAE.

Burj Khalifa opened in 2010. Xylem special designed variable speed booster sets distribute 1000 m³ of water every day all the way up to the top floor of the 800 m building.

Water supply: 6 water transfer sets and 7 pressure booster sets.



The intelligent and user friendly speed controller for pumps

The best way to save energy in most pump systems is to match the pump capacity exactly to the demand by continually controlling the speed in an intelligent way.

HYDROVAR is a pump or wall-mounted variable speed, micro-processor based system controller, and was the world's first of its type to manage motor speed and match pump performance to a range of hot and cold water applications.

This is the long-awaited solution for high-level installations requiring fail safe systems with a superior range of features. Due to its unique modular design, the unit can be mounted or retrofitted to any existing centrifugal pump with a standard IEC motor.

HYDROVAR does much more than just change the motor speed. It also manages your pump performance to match a wide range of system conditions, allowing energy savings up to 70%.* With no need for additional master control, a single Hydrovar can control up to 8 additional pumps in virtually any configuration.

HYDROVAR eliminates the need for expensive additional master control panels and circuitry, system control valves and large pressure vessels, providing you with:

- Lower capital equipment costs
- Less equipment to maintain
- Improved operational performance



HYDROVAR MOTOR MOUNTED

- Power from 1,1 to 22 kW
- Controls on constant pressure, constant flow, according to system curve and manually set
- Communicate with Modbus
- Shut off at zero head

* Tests carried out by TÜV Austria (Austrian testing authority) on 5 March 2005 based on comparative tables and data on intake performance at identical flow



eENERGY

Running pumps at full speed is a waste of energy. Xylem's Hydrovar delivers exactly the flow and head you need in your system. This is energy saving. This is the power of e.



eFFICIENCY

e is here. The ecocirc XL, new from Lowara. It's everything you need in a large wet rotor circulator and nothing you don't. The purposefully engineered, easy-to-install ecocirc XL is designed with simplicity and efficiency in mind. With a wide range of sizes and large coverage of flow curve, the ecocirc XL fits seamlessly into virtually any environment. This is your opportunity to create a more efficient system. This is the power of e.





Xylem offers a complete range of high efficiency pumps for heating, cooling and hot water systems, including state-of-the-art variable speed solutions.



ecocirc SERIES

- High efficiency energy saving variable speed circulators suitable for stand alone and boiler OEM applications.
- Capacities to 3m³/h
- Head to 6 m
- Maximum pressure 10 bar
- Temp -10°C to +110°C



ecocirc XL SERIES

- High efficiency energy saving variable speed circulators.
- Capacities to 60m³/h
- Head to 13 m
- Communicate with Modbus, RTU and Bacnet systems
- Temp -10°C to +110°C



FC SERIES

- Single head in-line pumps
- Capacities to 330m³/h
- Head to 89 metres
- Powers to 22kW
- Temp -20 C to +140 C
- Can be equipped with Hydrovar variable speed pump controller



FCT SERIES

- Twin head in-line pumps
- Capacities to 610m³/h
- Head to 89 metres
- Powers to 22kW
- Temp -20 C to +140 C
- Can be equipped with Hydrovar variable speed pump controller



LER/LEZ SERIES

- Large single and twin head in-line pumps
- Capacities to 1000m³/h
- Head to 80 m
- Powers to 160kW
- Max temp to -35°C to +180°C.
- Material options:
 - Cast Iron, Bronze or Stainless Steel.
 - Internal, external, double seal options available.

Water Supply



Reliable water supply means clean water out of the tap, as well as on the top floor.

Xylem offers Wedeco UV disinfection systems and a wide range of Lowara multistage pumps and prefabricated, ready to operate booster sets with or without variable speed control to meet your highest expectations for water quality, life cycle cost and efficient operation.



e-SV SERIES

- Stainless steel vertical multistage pumps
- Capacities up to 160 m³/h
- Head up to 330 m
- Power up to 55 kW
- Can be equipped with Hydrovar variable speed pump controller



FH SERIES

- Cast iron end suction pumps according to EN 733
- Capacities up to 700 m³/h
- Head up to 100 m
- Power up to 132 kW
- Can be equipped with Hydrovar variable speed pump controller



GS SERIES

- Fixed speed booster sets with 2-3 pumps.
- Capacities up to 480 m³/h
- Head up to 160 m
- Power up to 37 kW/ pump
- Communicate via Modbus



GV SERIES

- Variable speed booster sets with a variable speed drive and controller built in the control panel. For 2-6 pumps.
- Capacities up to 640 m³/h
- Head up to 160 m
- Power up to 37 kW/ pump
- Communicate via Modbus or internet



GHV SERIES

- Fully flexible variable speed booster sets where all pumps are speed controlled with individual Hydrovars. for 2-4 pumps
- Capacities up to 640 m³/h
- Head up to 160 m
- Power up to 22 kW/ pump
- Communicate via Modbus



AQUADA UV

- The benefits of Ultraviolet Disinfection, enhances overall water safety, no harmful chemicals or by-products, no affect on taste and water quality, simple to install with low maintenance and economical.
- Capacities up to 28 m³/h

A vertical multistage pump with the LOWARA logo is positioned on a city street at night. The pump is silver and blue, with the word 'LOWARA' written vertically on its side. The background features tall, modern skyscrapers with illuminated windows, creating a blue and white color palette. A large white circle is superimposed over the upper part of the image, containing the word 'eFFECTIVE' in a stylized font where the 'e' is red and the rest is white.

eFFECTIVE

The Lowara e-SV. Everything you require from a vertical multistage pump; high efficiency, robust performance, long life design and large flow and head coverage. This is your opportunity to create more effective boosting systems. This is the power of e.

An aerial night view of a city, likely Bangkok, showing a river (Chao Phraya River) and numerous illuminated buildings. A large white circle is superimposed over the center of the image, containing the word 'eVOLUTION' in a stylized font where the 'e' is red and the rest is white.

eVOLUTION

Evolution is a process of continual improvement. The Flygt N technology is the market-leading, self-cleaning wastewater pump derived from our 60 years of experience in developing solutions for wastewater applications. It combines high efficiency with superior non clogging qualities. Evolution also means we continuously work on improving the N technology to set new standards for wastewater handling. This is why you always benefit from our history. This is the power of e.





Market leader in public utility wastewater handling for decades.

Flygt products live up to the toughest demands in the market, and now can deliver new benefits to commercial buildings. Flygt non-clogging wastewater products are built to be efficient for decades in removing dirty water containing solids.

The range covers pumps with hydraulic technology optimized for the duty points, pumping station designs and monitoring/ control equipment.



D 3000 SERIES

- Submersible pumps with vortex impellers for high head / low flow duties
- Capacities up to 47 l/s
- Head up to 28 m
- Power up to 7,4 kW



N 3000 SERIES

- Submersible pumps with self cleaning impellers for long time efficient, non clogging wastewater pumping
- Capacities up to 600 l/s
- Head up to 100 m
- Power up to 70 kW



C 3000 SERIES

- Submersible pumps with closed channel impellers
- Capacities up to 100 l/s
- Head up to 48 m
- Power up to 7,4 kW



N&C 3001 SERIES

- Large submersible pumps with closed channel impellers for very high flow
- Capacities up to 3.300 l/s
- Head up to 100 m
- Power up to 560 kW



DRY INSTALLED PUMPS

- All Flygt wastewater pumps comes in versions for dry pit installation.



TOP STATION CONCEPT

- A self cleaning pumping station design that prevent clogging and odours. The TOP station is available in prefabricated GRP or PE as well as on site built concrete stations.



DL-DLV SERIES WITH SOLIDS HANDLING CAPABILITIES & STAINLESS STEEL MOTOR

- Single-channel or vortex impeller designs
- Mechanical seal of SiC/SiC/NBR construction as standard
- Single and three phase versions to 1.5kW
- Maximum liquid temperatures: 25°C partially submerged / 50°C full submerged
- Maximum solids handling
 - 45mm: DL80, 90, 105
 - 50mm: DL109, 125, 160, DLV100, 115



GL-GLV SERIES WITH CAST IRON MOTOR

- 304SS construction impellers in single-channel or vortex design
- Mechanical seal protected by sand labyrinth
- Single and three phase versions to 2.2kW
- Maximum liquid temperatures
 - 30°C partially submerged /
 - 50°C full submerged

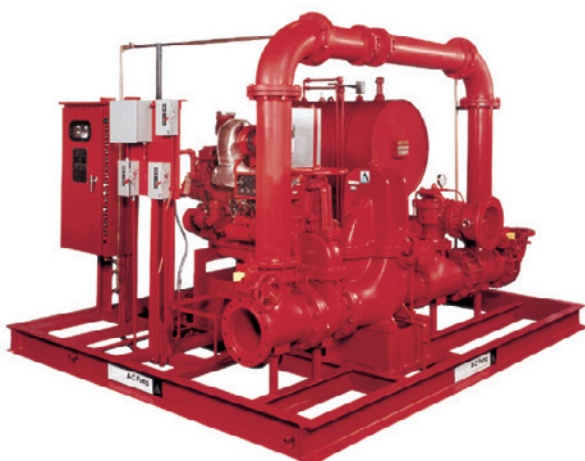
Fire Fighting



The Broad range of Lowara firefighting booster sets conform to local requirements for automatic sprinkler systems.

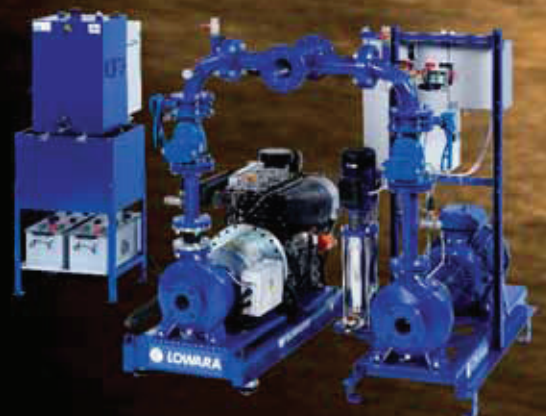
Lowara fire fighting booster sets are available with the use of either an electric motor or a diesel engine, depending on the type of water supply needed and the level of reliability required from the system. The booster sets are manufactured using either cast-iron or stainless steel centrifugal end suction pumps, ensuring all fire system application requirements can be met. The modular design of the booster not only keeps installation easy and simple, but enables each fire set module to be tailored to meet the fire systems specific requirements. Electric or diesel engine motors can be selected with each module which helps the end user to obtain the correct configuration, ensuring the highest levels of safety and reliability.

A range of accessories are also available, such as a flow meter, reduction suction taper and alarm panels. The booster sets also feature either an automatic self-test or automatic shut off feature which allows maintenance of the system to be performed without the need to shut down the system fully.



eSSENTIAL

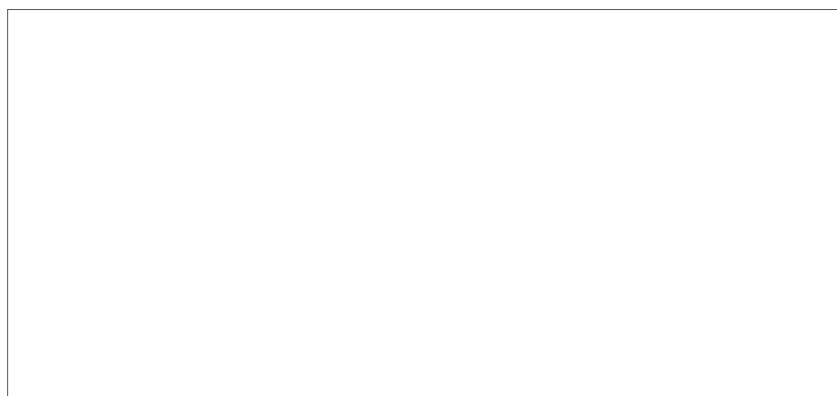
In automatic sprinkler systems, trustworthy products are a must. Designed and tested to meet a building's most demanding requirements, Lowara GEN firefighting booster sets deliver water when needed. This is essential. This is the power of e.



Xylem |'zīləm|

- 1) The tissue in plants that brings water upward from the roots;
- 2) a leading global water technology company.

We're 12,900 people unified in a common purpose: creating innovative solutions to meet our world's water needs. Developing new technologies that will improve the way water is used, conserved, and re-used in the future is central to our work. We move, treat, analyze, and return water to the environment, and we help people use water efficiently, in their homes, buildings, factories and farms. In more than 150 countries, we have strong, long-standing relationships with customers who know us for our powerful combination of leading product brands and applications expertise, backed by a legacy of innovation. For more information on how Xylem can help you, go to www.xylem.com



Xylem Water Systems Australia Pty. Ltd.
Unit 3/1 Federation Way,
Chifley Business Park,
Mentone, Victoria 3194
Australia
Tel: +61.3.8551.6888
Fax: +61.3.8551.6870

www.xylemappliedwater.com.au

Lowara, Vogel Pumpen, Bell & Gossett and AC Fire Pump are trademarks of Xylem Inc. ©2012 Xylem, Inc.
Goulds is a registered trademark of Goulds Pumps, Inc. and is used under license.